

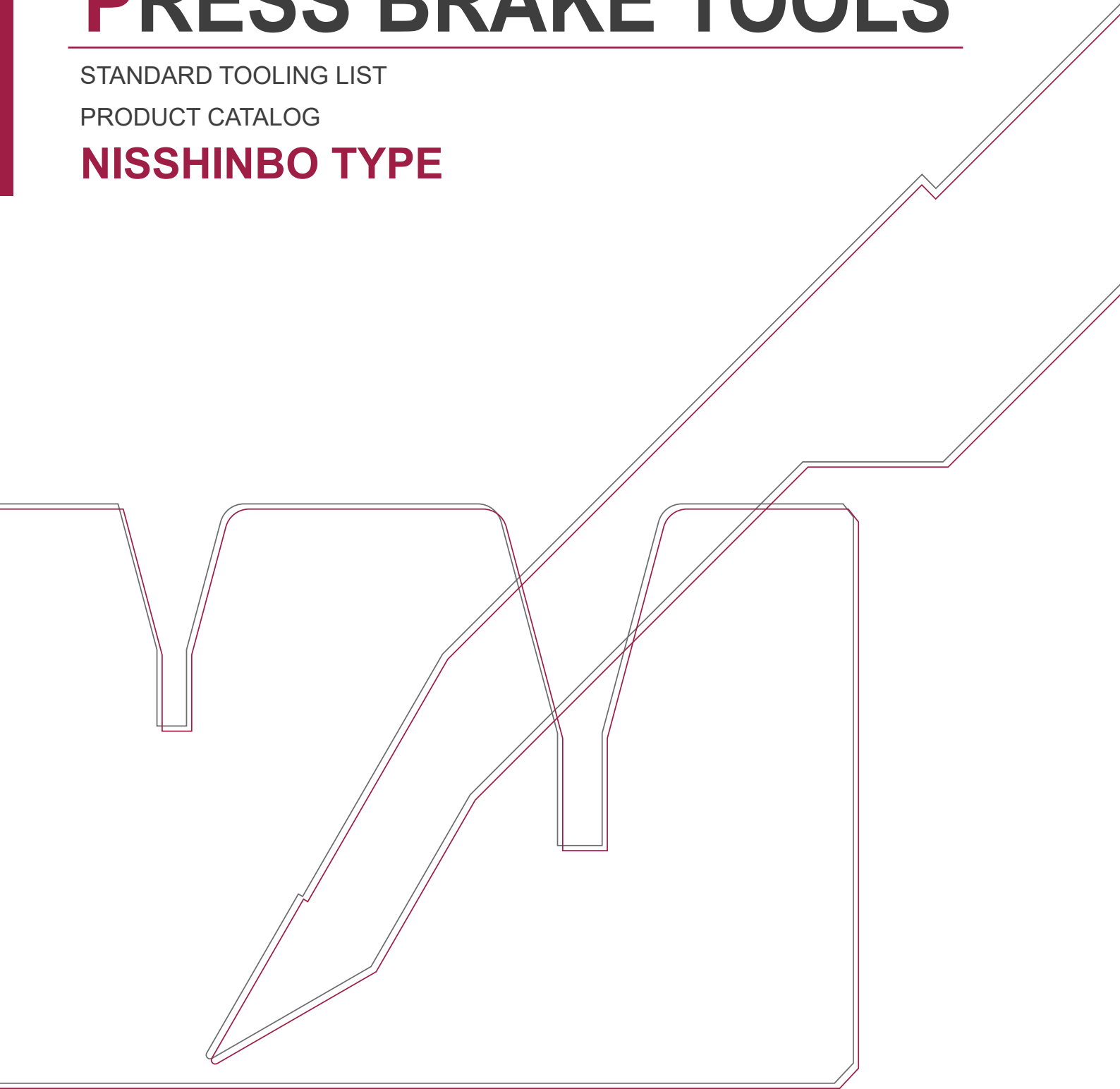
# PRESS BRAKE TOOLS

---

STANDARD TOOLING LIST

PRODUCT CATALOG

**NISSHINBO TYPE**



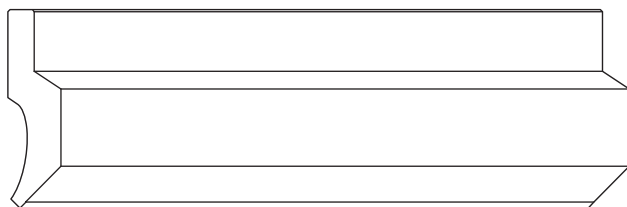
# INDEX

---

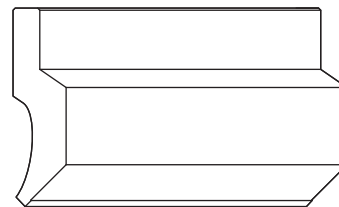
<b>INFORMATION</b> .....	<b>03</b>
<b>CLAMP TYPE</b> .....	<b>04</b>
<b>STANDARD PUNCH (NP02)</b> .....	<b>05</b>
<b>STANDARD PUNCH (NP03)</b> .....	<b>06</b>
<b>STANDARD PUNCH (NP04)</b> .....	<b>07</b>
<b>STANDARD PUNCH (NP05)</b> .....	<b>08</b>
<b>STANDARD PUNCH (NP06)</b> .....	<b>09</b>
<b>SPECIAL PUNCH (NP10)</b> .....	<b>10</b>
<b>SPECIAL PUNCH (NP10)</b> .....	<b>11</b>
<b>SPECIAL PUNCH (NP11)</b> .....	<b>11</b>
<b>STANDARD DIE (V00-25)</b> .....	<b>12-13</b>
<b>STANDARD DIE (V32-100)</b> .....	<b>14</b>
<b>STANDARD 2V DIE</b> .....	<b>15</b>
<b>HIGH HEIGHT DIE</b> .....	<b>16-17</b>
<b>BEND CHART</b> .....	<b>18</b>
<b>ORDER SHEET</b> .....	<b>19</b>

# INFORMATION

## ■ TOOL LENGTH

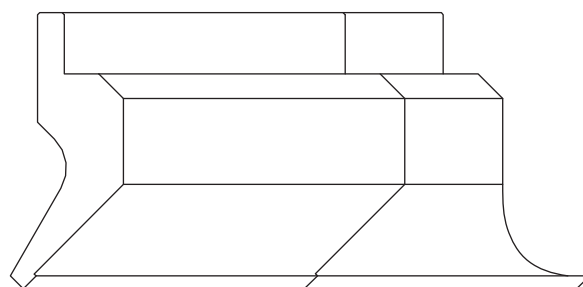
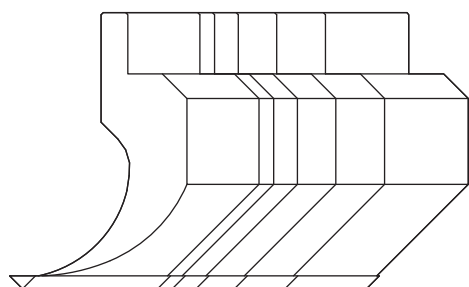


Type L 835 mm



Type S 415 mm

## ■ SECTIONING



## ■ SECTIONING (PUNCH)

Type L: 835mm      Type S: 415mm

SECTIONING A 10 ▪ 15 ▪ 20 ▪ 40 ▪ 50 ▪ 100 (Right end) ▪ 100 (Left end) ▪ 200 ▪ 300(Total 835mm)

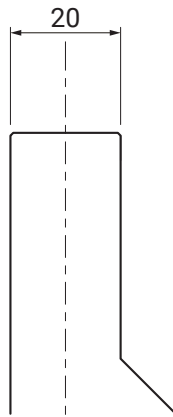
## ■ SECTIONING (DIE)

10 ▪ 15 ▪ 20 ▪ 40 ▪ 50 ▪ 100 ▪ 200 ▪ 400(Total 835mm)

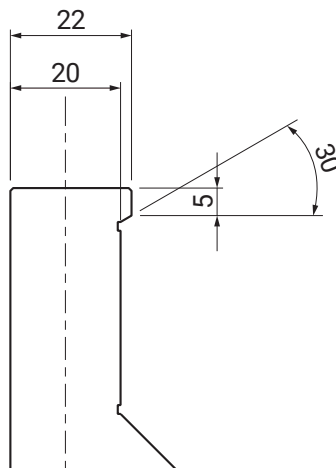
# CLAMP TYPE

---

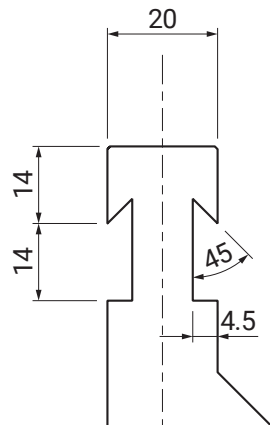
## ■ STANDARD-TYPE



## ■ S-TYPE



## ■ R-TYPE



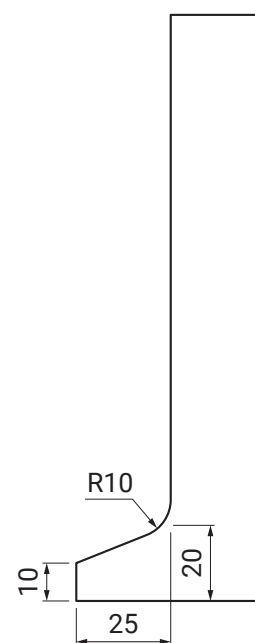
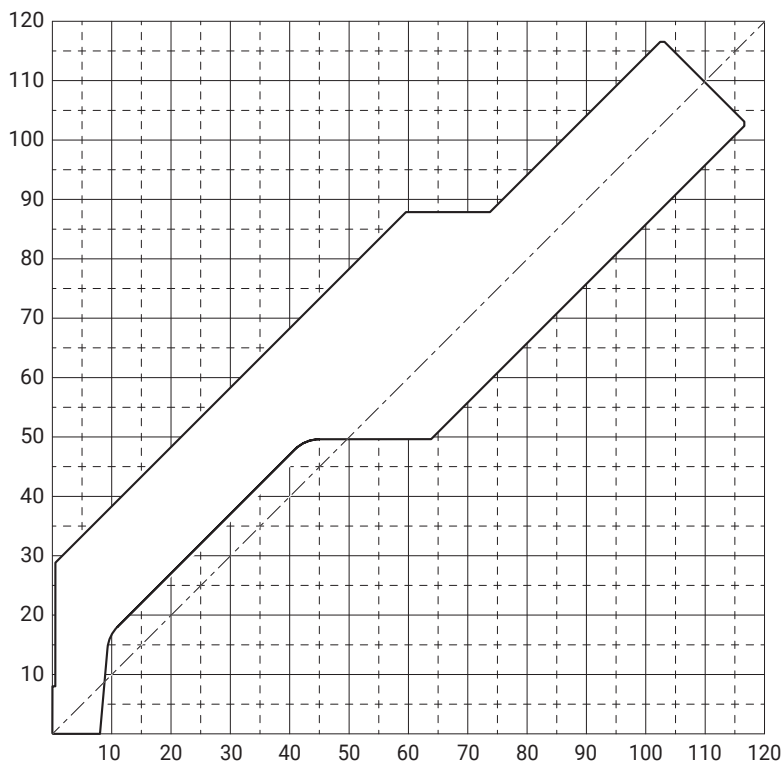
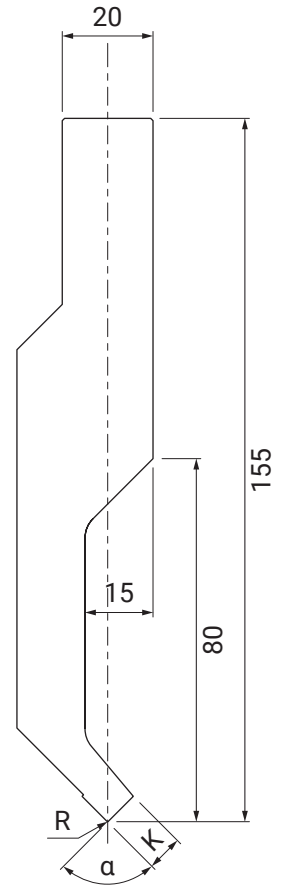
# STANDARD PUNCH(NP02)

Material: **SCM440**      Hardness: **HRC47 ± 3**

L: 835mm    S: 415mm

Sectioning A

Type	α	R	K	Max	Product No.
	Angle	(mm)	(mm)	(ton/m)	
NP02	85	0.2	6	20	P201
		0.4			P202
		1.0			P203
		0.2	8		P211
		0.4			P212
		1.0			P213
	88	0.2	6	20	P221
		0.4			P222
		1.0			P223
		0.2	8		P231
		0.4			P232
		1.0			P233
	90	0.2	6	20	P241
			8	35	P251



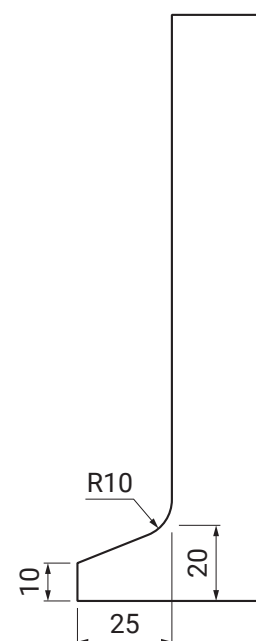
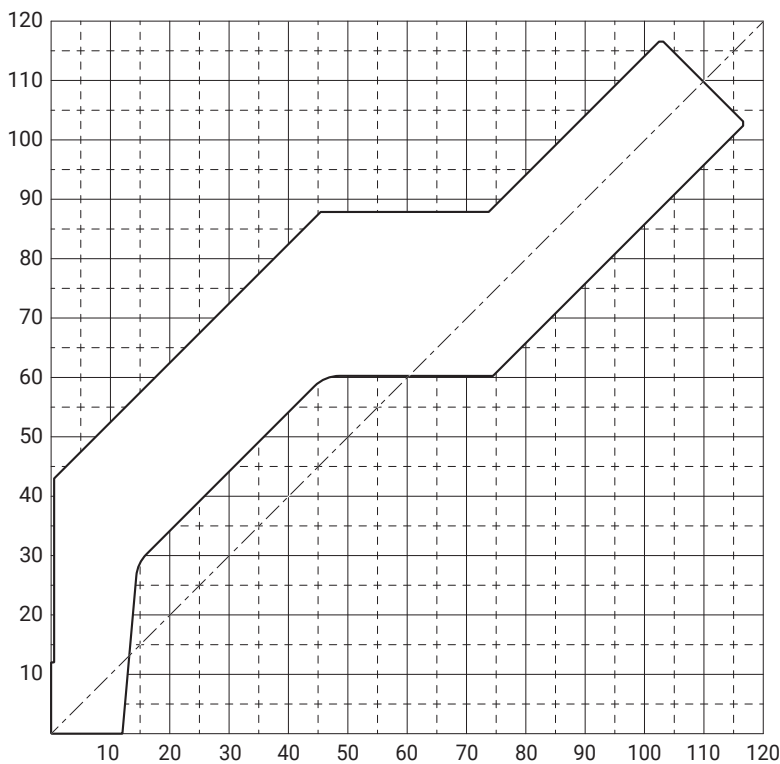
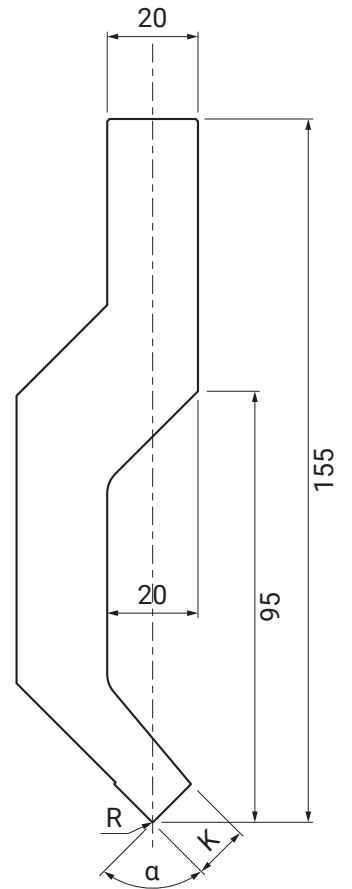
# STANDARD PUNCH (NP03)

Material: **SCM440** Hardness: **HRC47 ± 3**

L: 835mm S: 415mm

Sectioning A

Type	α	R	K	Max	Product No.
	Angle	(mm)	(mm)	(ton/m)	
NP03	85	0.2	9	25	P301
		0.4			P302
		1.0			P303
		0.2	12		P311
		0.4			P312
		1.0			P313
	88	0.2	9	25	P321
		0.4			P322
		1.0			P323
		0.2	12		P331
		0.4			P332
		1.0			P333
	90	0.2	9	25	P341
			12	45	P351



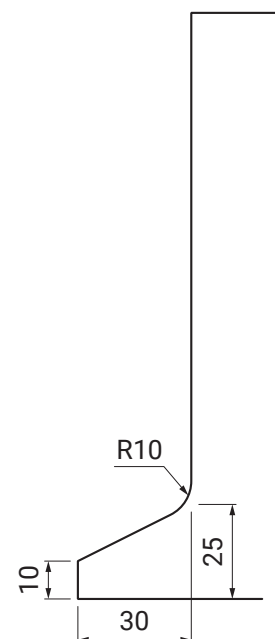
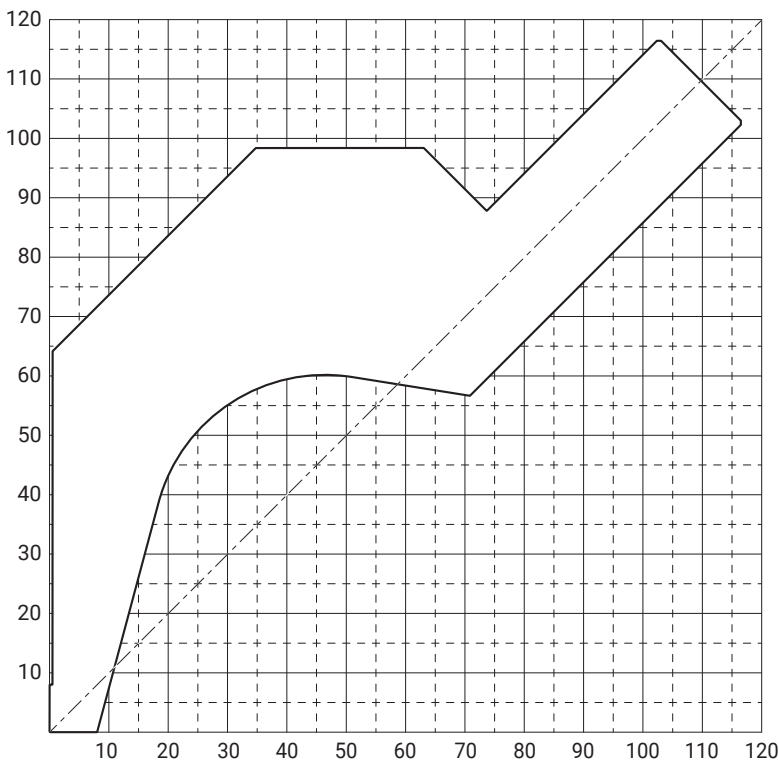
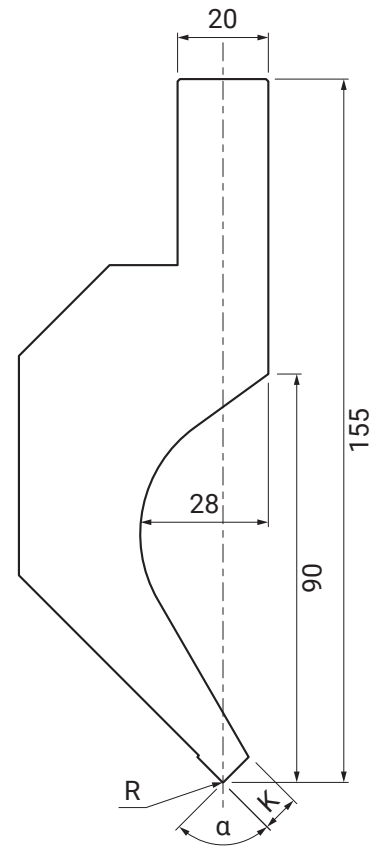
# STANDARD PUNCH (NP04)

Material: **SCM440** Hardness: **HRC47 ± 3**

L: 835mm S: 415mm

Sectioning A

Type	α	R	K	Max	Product No.
	Angle	(mm)	(mm)	(ton/m)	
NP04	85	0.2	6	55	P401
		0.4			P402
		1.0			P403
		0.2	8		P411
		0.4			P412
		1.0			P413
	88	0.2	6	55	P421
		0.4			P422
		1.0			P423
		0.2	8		P431
		0.4			P432
		1.0			P433
	90	0.2	6	55	P441
			8	65	P451



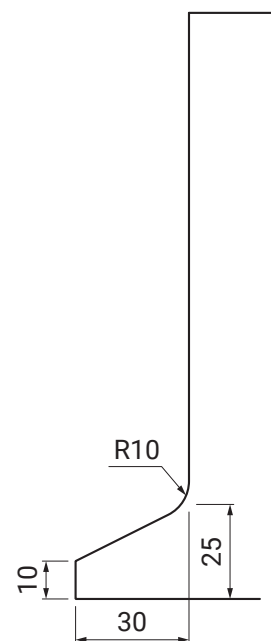
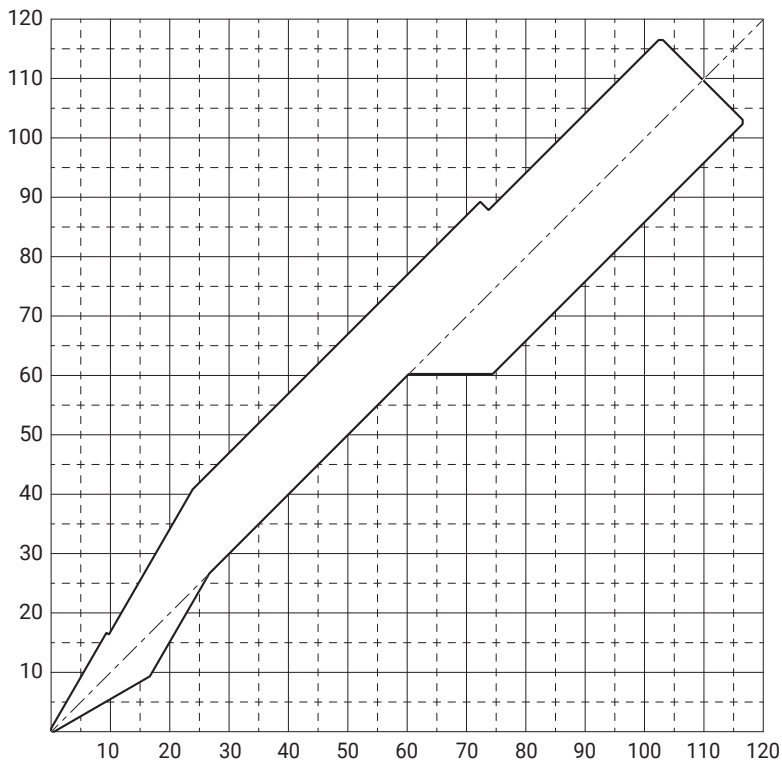
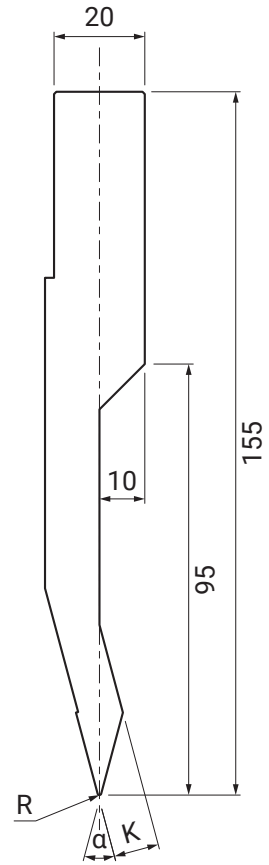
# STANDARD PUNCH (NP05)

Material: **SCM440** Hardness: **HRC47 ± 3**

L: 835mm S: 415mm

Sectioning A

Type	$\alpha$ Angle	R (mm)	K (mm)	Max (ton/m)	Product No.
NP05	30	0.2	10	50	P501
		0.4			P502
		1.0			P503





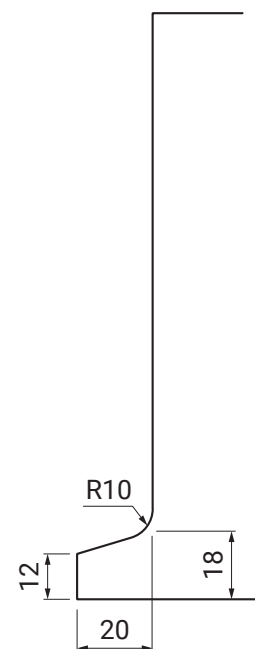
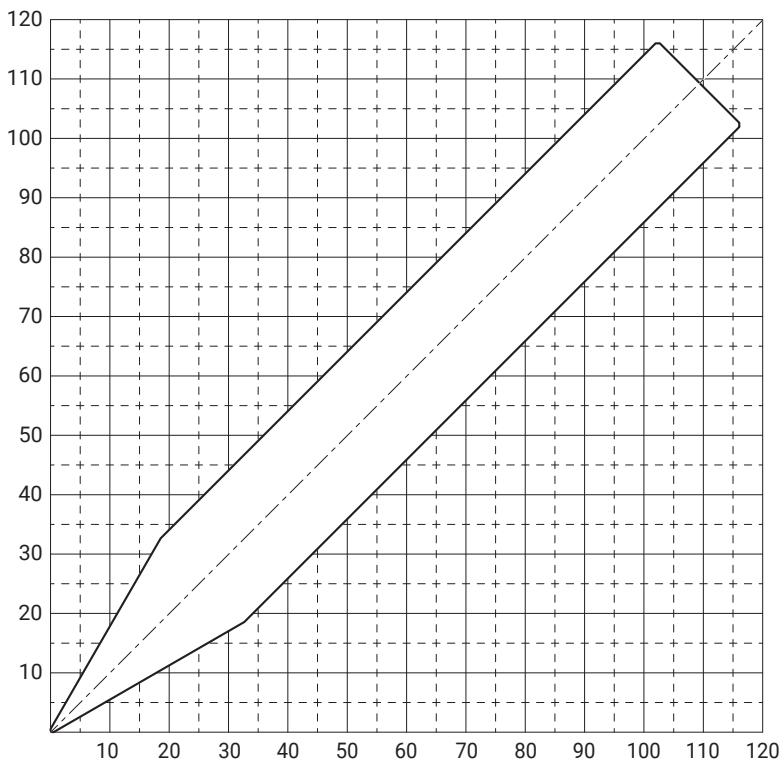
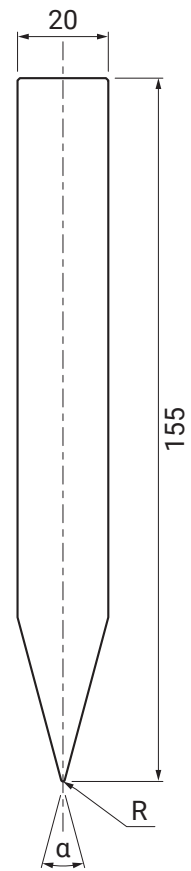
# STANDARD PUNCH (NP06)

Material: **SCM440**      Hardness: **HRC47 ± 3**

L: 835mm    S: 415mm

Sectioning A

Type	α	R (mm)	K (mm)	Max (ton/m)	Product No.
	Angle				
NP06	30	0.2	-	100	P601
		0.4	-		P602
		1.0	-		P603
		3.0	-		P604
	60	5.0	-		P611



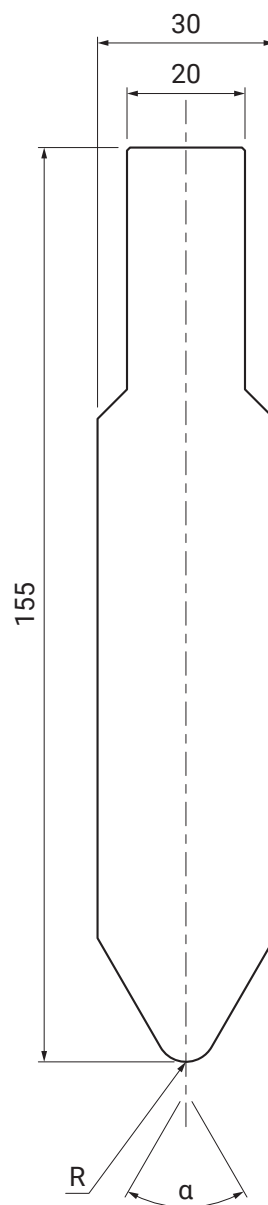
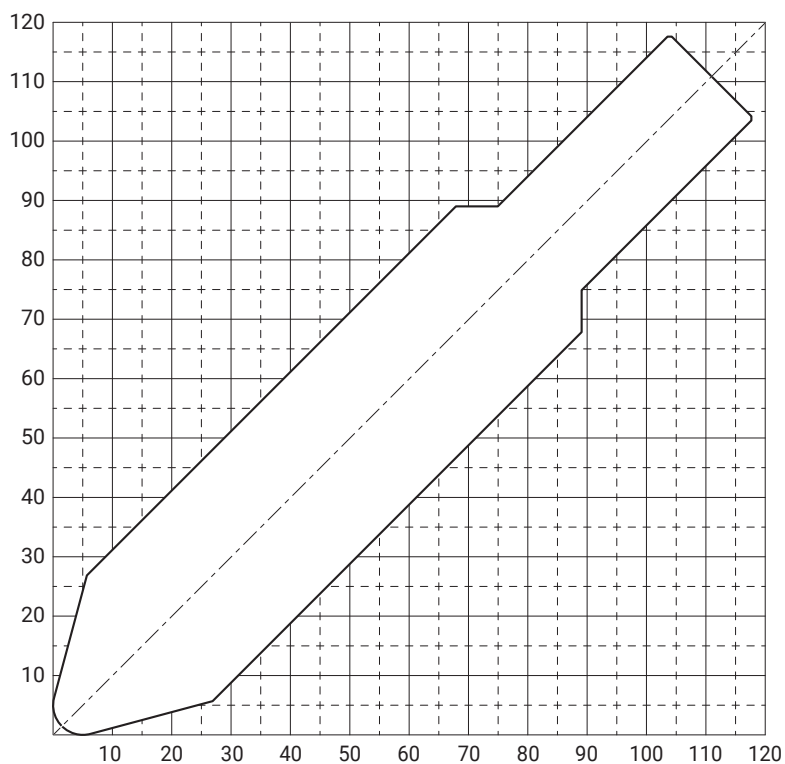
# SPECIAL PUNCH (NP10) ONE PIECE PUNCH

Material: **SCM440**      Hardness: **HRC47 ± 3**

L: 835mm    S: 415mm

Sectioning A

Type	$\alpha$	R	MAX	Product No.
	Angle	(mm)	(ton/m)	
NP10	60	5.0	100	P102
		10.0		P103
		15.0		P104



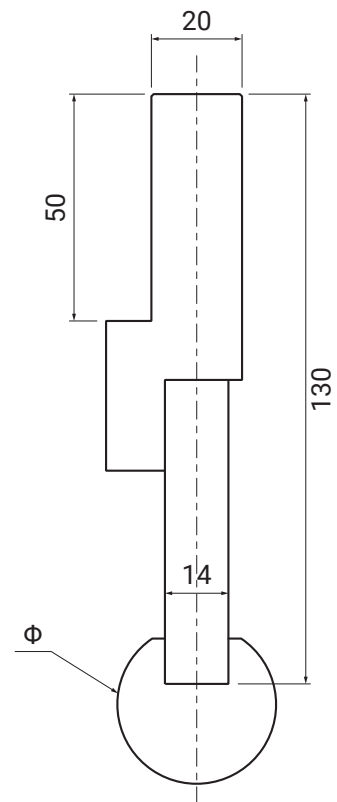
# SPECIAL PUNCH (NP10) PUNCH TIPS

Material: S50C      Hardness: HRC25 ± 3

L: 835mm S: 415mm

Sectioning A

Type	α	φ	Max	Product No.
		(mm)	(ton/m)	
NP10	Holder	-		P101
	Punch tip	28	100	D028
		30		D030
		35		D035
		40		D040
		45		D045
		50		D050
		55		D055
		60		D060
		65		D065



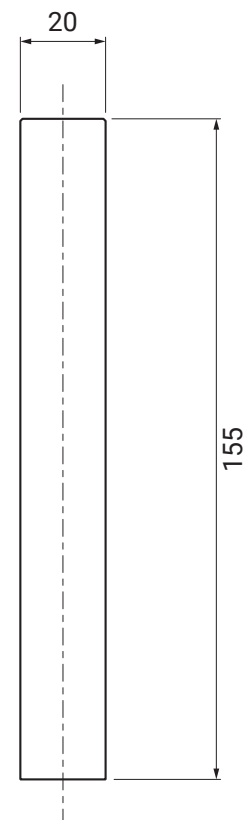
# STANDARD PUNCH (NP11)

Material: SCM440      Hardness: HRC47 ± 3

L: 835mm S: 415mm

Sectioning A

Type	α	R	K	Max	Product No.
	Angle	(mm)	(mm)	(ton/m)	
NP11	-	-	-	100	P111



# STANDARD DIE (V00-25)

Material: SCM440 Hardness: HRC47 ± 3

L: 835mm S: 415mm

Sectioning : 835mm

Series	Type	V	α	R	A	B	Max	Product No.
		(mm)	Angle	(mm)	(mm)	(mm)	(ton/m)	
NA	V00A	-	-	-	-	-	100	V000-00-01

Series	Type	V	α	R	A	B	Max	Product No.
		(mm)	Angle	(mm)	(mm)	(mm)	(ton/m)	
NA	V04A	4	85	0.7	2.0	7.0	60	V004-85-01
			88					V004-88-01
			90					V004-90-01
	V06A	6	85	1.0	3.0	10.0	80	V006-85-01
			88					V006-88-01
			90					V006-90-01
	V08A	8	85	1.0	4.0	12.0	90	V008-85-01
			88					V008-88-01
			90					V008-90-01
	V10A	10	85	1.5	5.0	15.0	100	V010-85-01
			88					V010-88-01
			90					V010-90-01
	V12A	12	85	1.5	6.0	18.0	100	V012-85-01
			88					V012-88-01
			90					V012-90-01
	V14A	14	85	1.5	7.0	22.0	100	V014-85-01
			88					V014-88-01
			90					V014-90-01

Series	Type	V	α	R	A	B	Max	Product No.
		(mm)	Angle	(mm)	(mm)	(mm)	(ton/m)	
NAM	V06M	6	85	2.5	3.0	10.0	80	V006-85-21
	V08M	8		3.0	4.0	12.0	90	V008-85-21
	V10M	10		3.5	5.0	15.0	100	V010-85-21
	V12M	12		4.0	6.0	18.0		V012-85-21
	V14M	14		5.0	7.0	22.0		V014-85-21

Series	Type	V	α	R	A	B	Max	Product No.
		(mm)	Angle	(mm)	(mm)	(mm)	(ton/m)	
NA	V04A	4	30	0.7	5.0	7.0	15	V004-30-01
	V06A	6		1.0	8.0	10.0	18	V006-30-01
	V08A	8			10.0	12.0	21	V008-30-01
	V10A	10		1.5	14.0	15.0	24	V010-30-01
	V12A	12			15.0	18.0	36	V012-30-01
	V14A	14			18.0	22.0	45	V014-30-01

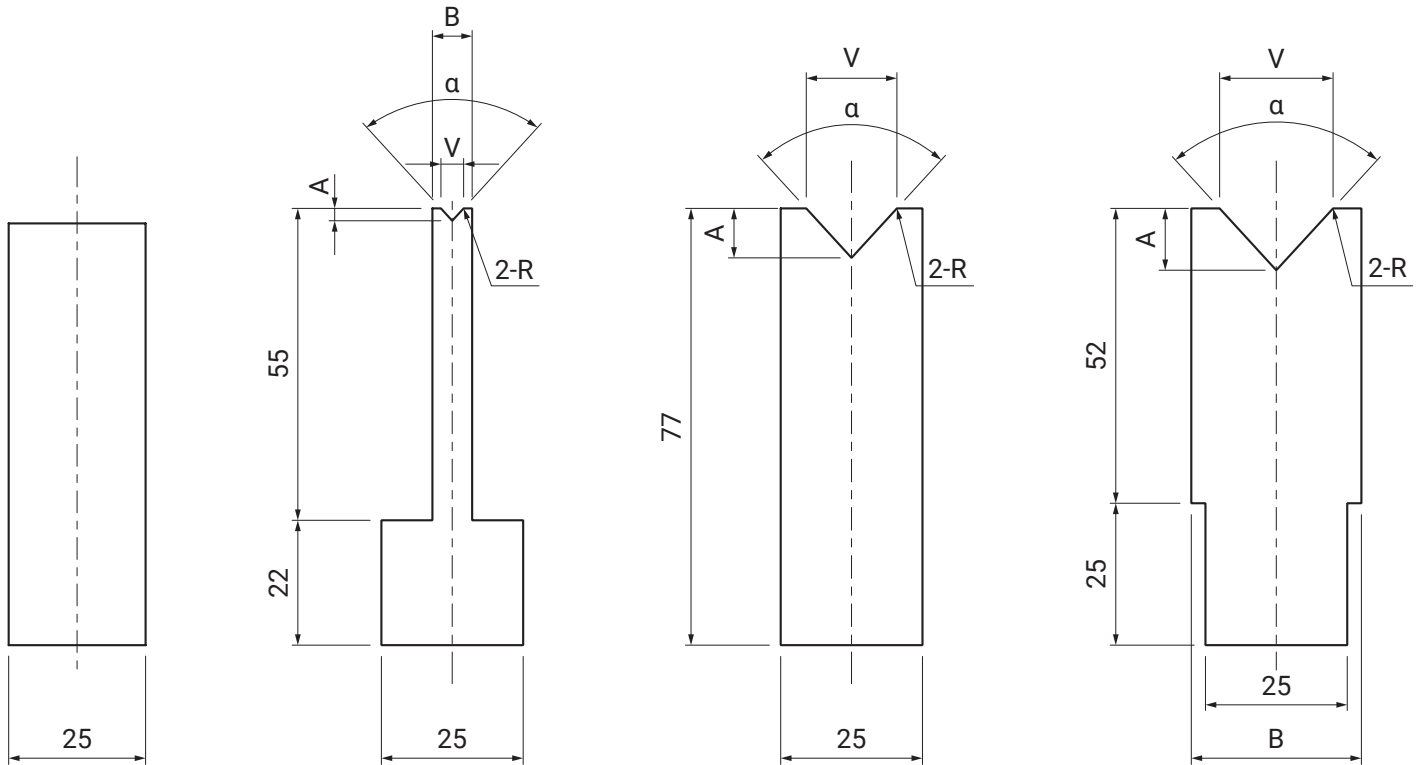
# STANDARD DIE(V00-25)

■ V00

■ V04-14

■ V16

■ V20-25



Series	Type	V	$\alpha$	R	A	B	Max	Product No.
		(mm)	Angle	(mm)	(mm)	(mm)	(ton/m)	
NA	V16A	16	85	1.5	8.0	-	100	V016-85-01
			88					V016-88-01
			90					V016-90-01

Series	Type	V	$\alpha$	R	A	B	Max	Product No.
		(mm)	Angle	(mm)	(mm)	(mm)	(ton/m)	
NA	V16A	16	30	1.5	22.0	25.0	50	V016-30-01

Series	Type	V	$\alpha$	R	A	B	Max	Product No.
		(mm)	Angle	(mm)	(mm)	(mm)	(ton/m)	
NA	V20A	20	85	2.5	10.0	30.0	100	V020-85-01
			88					V020-88-01
	V25A	25	85	3.0	13.0	36.0	V025-85-01	

Series	Type	V	$\alpha$	R	A	B	Max	Product No.
		(mm)	Angle	(mm)	(mm)	(mm)	(ton/m)	
NA	V20A	20	30	2.5	28.0	30.0	60	V020-30-01
	V25A	25		3.0	30.0	36.0	70	V025-30-01

# STANDARD DIE (V32-100)

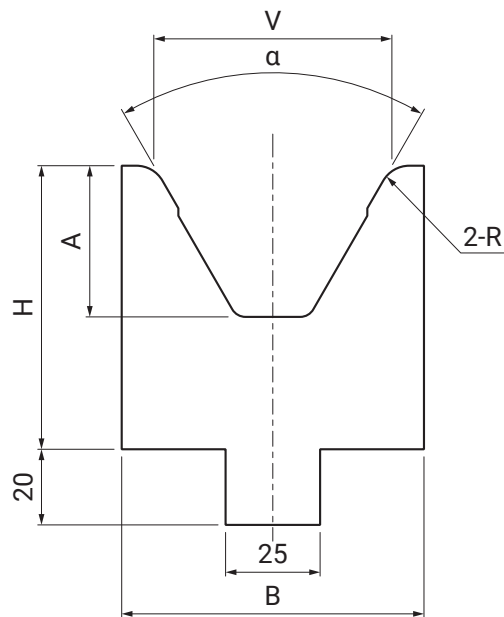
## ■ V32-63

Material: SCM440

Hardness: HRC47 ± 3

L: 835mm S: 415mm

Sectioning : 835mm



Series	Type	V	α	R	A	B	H	Max (ton/m)	Product No.
		(mm)	Angle	(mm)	(mm)	(mm)	(ton/m)		
NA	V32M	32	40	4.0	30.0	45.0	55.0	100	V032-40-01
	V40M	40		5.0	37.0	60.0			V040-40-01
	V50M	50	60	6.0	35.0	65.0	V050-60-01		
	V63M	63		8.0	40.0	80.0	75.0		V063-60-01

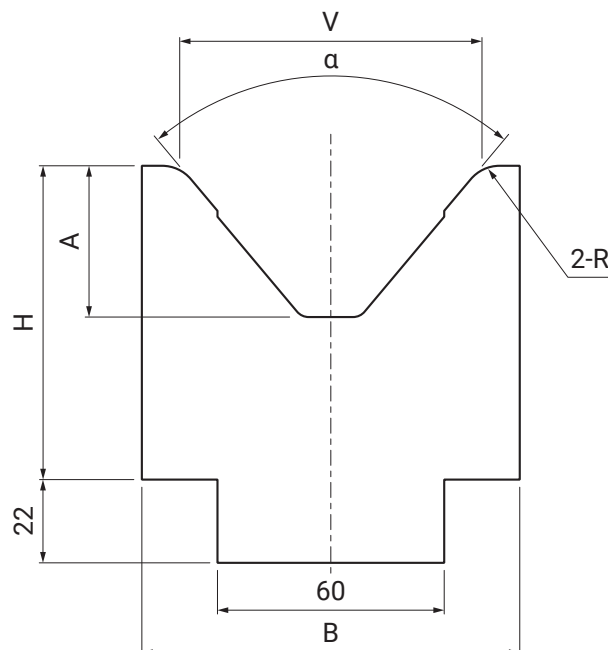
## ■ V80-100

Material: SCM440

Hardness: HRC47 ± 3

L: 835mm S: 415mm

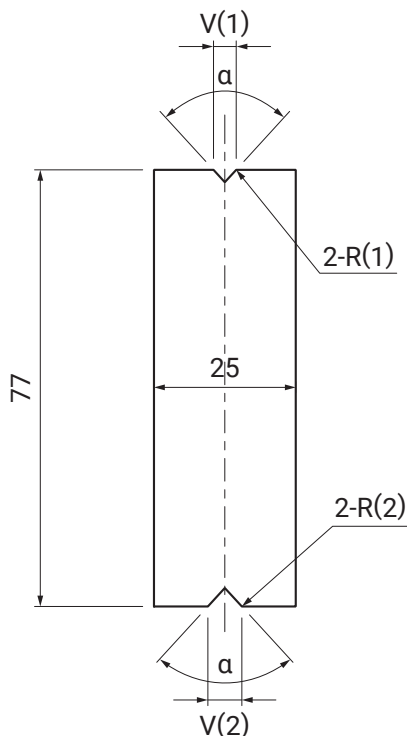
Sectioning : 835mm



Series	Type	V	α	R	A	B	H	Max (ton/m)	Product No.
		(mm)	Angle	(mm)	(mm)	(mm)	(ton/m)		
NA	V80A	80	80	10.0	40.0	100.0	83.0	100	V080-80-01
	V100A	100		12.5	45.0	125.0	93.0		V100-80-01

# STANDARD 2V DIE

Material: SCM440  
 Hardness:HRC47 ± 3  
 L: 835mm S: 415mm  
 Sectioning : 835mm



Series	Type	V(1)	V(2)	α	R(1)	R(2)	Max (ton/m)	Product No.	
		(mm)	(mm)	Angle	(mm)	(mm)			
N2V	V099C	4	6	85	0.7	1.0	100/90	V099-85-01	
				88				V099-88-01	
			8	85	0.7	1.0		100/80	V099-85-02
				88					V099-88-02
		6	8	85	1.0	1.0	90/80	V099-85-11	
				88				V099-88-11	
			10	85	85	1.0	1.5	90/70	V099-85-12
					88				V099-88-12
				12	85	1.0	1.5	90/60	V099-85-13
					88				V099-88-13
		8	10	85	1.0	1.5	80/70	V099-85-21	
				88				V099-88-21	
			12	85	85	1.0	1.5	80/60	V099-85-22
					88				V099-88-22
				14	85	1.0	1.5	80/50	V099-85-23
					88				V099-88-23
		10	12	85	1.5	1.5	70/60	V099-85-31	
				88				V099-88-31	
			14	85	1.5	1.5	70/50	V099-85-32	
				88				V099-88-32	
12	14	85	1.5	1.5	60/50	V099-85-41			
		88				V099-88-41			
6	0	30	1.0	-	90/100	V099-30-01			
8						80/100	V099-30-02		
10						70/100	V099-30-03		

# HIGH HEIGHT DIE

Material: **SCM440** Hardness: **HRC47 ± 3**

L: 835mm S: 415mm

Sectioning : 835mm

Series	Type	V	α	R	A	B	Max	Product No.
		(mm)	Angle	(mm)	(mm)	(mm)	(ton/m)	
NA	V04S	4	85	0.7	2.0	7.0	20	V004-85-11
			88					V004-88-11
	V06S	6	85	1.0	3.0	10.0	60	V006-85-11
			88					V006-88-11
			30	1.0	11.2			V006-30-11
	V08S	8	85	1.0	4.0	12.0	90	V008-85-11
			88					V008-88-11
			30	1.0	15.0			V008-30-11
	V10S	10	85	1.5	5.0	15.0	100	V010-85-11
			88					V010-88-11
			30	1.5	18.6			V010-30-11
	V12S	12	85	1.5	6.0	18.0	100	V012-85-11
			88					V012-88-11
			30	1.5	22.4			V012-30-11
	V14S	14	85	1.5	7.0	22.0	100	V014-85-11
			88					V014-88-11
30			1.5	26.1	V014-30-11			

Series	Type	V	α	R	A	B	Max	Product No.
		(mm)	Angle	(mm)	(mm)	(mm)	(ton/m)	
NSM	V06MS	6	85	2.5	3.0	10.0	60	V006-85-31
	V08MS	8		3.0	4.0	12.0	90	V008-85-31
	V10MS	10		3.5	5.0	15.0	100	V010-85-31
	V12MS	12		4.0	6.0	18.0		V012-85-31
	V14MS	14		5.0	7.0	22.0		V014-85-31

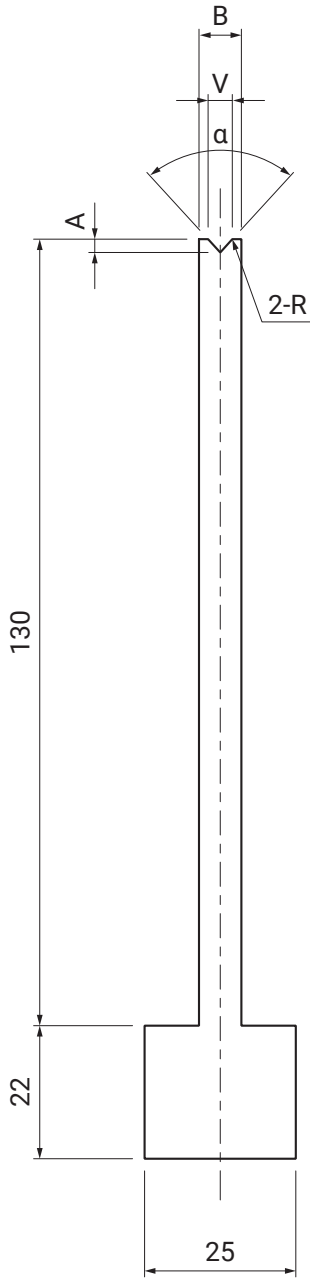
Series	Type	V	α	R	A	B	Max	Product No.
		(mm)	Angle	(mm)	(mm)	(mm)	(ton/m)	
NS	V16S	16	85	1.5	8.0	25.0	100	V016-85-11
			88					V016-88-11
			30	1.5	30.0			V016-30-11

Series	Type	V	α	R	A	B	Max	Product No.
		(mm)	Angle	(mm)	(mm)	(mm)	(ton/m)	
NS	V20S	20	85	2.5	10.0	30	100	V020-85-11
			88					V020-88-11
			30	2.5	37.3			V020-30-11

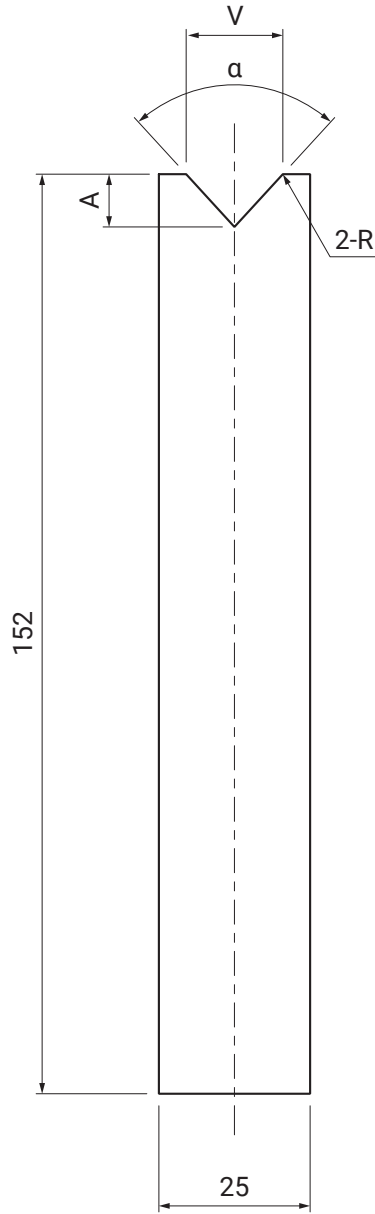


# HIGH HEIGHT DIE

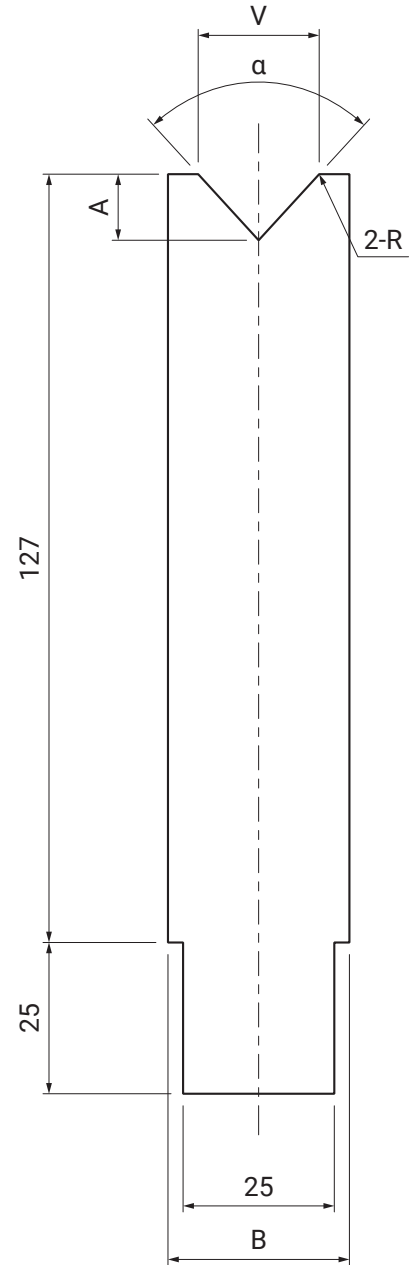
■ V04-14



■ V16



■ V20



# BEND CHART

t : Material thickness

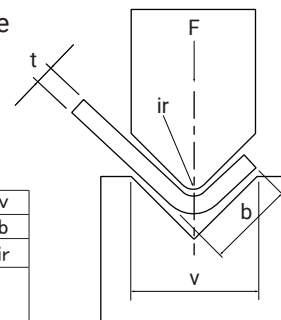
F : Pressure per 1m (kN/m)

b : Minimum length of flange

(Tensile Strength 450~500N/mm<sup>2</sup>)

ir : Radius of punch tip

v : Width of die



## For mild steel

t	4	6	7	8	10	12	14	16	18	20	25	32	40	50	63	80	100	125	160	200	250	v
(mm)	2.8	4	5	5.5	7	8.5	10	11	13.5	14	17.5	22	28	35	45	55	71	89	113	140	175	b
0.5	0.7	1	1.1	1.3	1.6	2	2.3	2.6	3	3.3	4	5	6.5	8	10	13	16	20	26	33	41	ir
0.6	60	40	40	40																		
0.8		70	70	50	40																	
1		110	100	80	70	60																
1.2			140	120	110	80	70	60														
1.4				150	130	110	100	90	80													
1.5				200	170	150	130	110	100	90												
1.6					170	150	130	110	100	90												
2						220	190	170	150	130	110											
2.3							250	230	190	170	150	120										
2.6								280	250	220	180	140										
3									340	300	240	190	150									
3.2										340	270	220	170	140								
3.5											330	260	200	160	130							
4											430	340	270	210	170							
4.5												440	340	270	210							
5													520	420	330	260	210					
6														600	480	380	300	240				
7															520	410	330	260				
9																670	540	430				
10																850	670	530	420			
12																	960	780	600	550		
16																		1360	1070	860		
19																			1500	1250	1000	
20																			1700	1350	1080	
22																				1600	1300	
25																				2100	1700	
30																					2400	

F (kN)

## For stainless

t	4	6	7	8	10	12	14	16	18	20	25	32	40	50	63	80	100	125	160	200	250	v
(mm)	2.8	4	5	5.5	7	8.5	10	11	13.5	14	17.5	22	28	35	45	55	71	89	113	140	175	b
0.5	60	50																				
0.6	90	60	60	60																		
0.7	120	80	80	60	60																	
0.8		110	110	80	70																	
0.9		130	120	100	90	70																
1		170	150	120	110	90																
1.2			210	180	150	120	110	90														
1.5				290	230	200	170	150	130	120												
2						330	290	260	230	200	170											
2.5								390	350	300	250	190										
3									510	450	360	290	230									
4										650	510	410	320	260								
5											780	630	500	390	320							
6												900	720	570	450	360						
8														1020	810	650	510					
10															1290	1010	800	630				
12																1440	1170	900	830			
15																	1800	1410	1140			
20																		2500	2080	1670		
25																			3150	2550		
30																					3600	

F (kN)

# Bending Tool Quote / Order Form

Date/ (MM) (DD) (YYYY)

Page  
/

**URL** www.conic.co.jp

**EMAIL** tools@conic.co.jp

CONIC's Person in charge:

<b>1. Quote</b>		<b>2. Order</b>	
Your company name	Country	TEL + (0)	Preferred delivery date
Person in charge		FAX + (0)	/ (MM) (DD)
Email			

Machine maker's name	Name of machine (for example: RG80)	Machine spec
<input type="checkbox"/> Nisshinbo <input type="checkbox"/> Yawei-Nisshinbo <input type="checkbox"/> Bystronic <input type="checkbox"/> e.t.c (                    )		CAPACITY            :            kN(ton) TABLE LENGTH    : L =            mm OPEN HEIGHT        : H =            mm

Tool Material	Series	Clamp Type		
<input checked="" type="checkbox"/> Japan - Type	<input checked="" type="checkbox"/> NISSHINBO	<input type="checkbox"/> STANDARD TYPE + GROOVE	<input type="checkbox"/> S - TYPE	<input type="checkbox"/> R - TYPE

Product No. (for example: P251)	Quantity			Remarks
	L (835mm)	S (415mm)	Sectioning (835mm)	

◆ Please draw special shapes here.



## PRODUCT CATALOG

### NISSHINBO TYPE


---

#### CONIC HIGH PERFORMANCE TOOLING

- AMADA TYPE TOOLING
- TRUMPF TYPE TOOLING
- MURATA TYPE TOOLING
- KOMATSU TYPE TOOLING
- TOYOKOKI TYPE TOOLING
- NISSHINBO TYPE TOOLING

Download for your mobile



High Quality & Technology For  The Future

# CONIC

#### CONIC CO., LTD

10-5 Taihei-dai, Shoo-cho, Katsuta-gun, Okayama 709-4321 Japan

Tel: (+81) 868 38 6154 | Fax: (+81) 868 38 6331

Email: [tools@conic.co.jp](mailto:tools@conic.co.jp) | Website: [www.conic.co.jp](http://www.conic.co.jp)

#### CONIC PRECISION CO., LTD

55/22 moo 4. Buengkumphroy, Lumlukka, Phatumthani 12150 Thailand

Tel: (+66) 2 159 9870-1 | Fax: (+66) 2 159 9872

Email: [conic\\_thai@conic.co.jp](mailto:conic_thai@conic.co.jp) | Website: [www.conic.co.jp/thai/](http://www.conic.co.jp/thai/)

Dealer