

KIZU-NON SHEET

(Bending Scratch Prevention Sheet)

***Are you troubled by bending marks that occur in sheet metal bending processes?
Take measures with Super Fiber Kizu-non Sheet!***

Applicable plate thickness: 0.5 to 3.2mm



- Prevents bending marks on stainless steel, aluminum, colored steel plates, etc., caused by bender.
- Prevents wear and welding of dies caused by surface-treated steel plates, etc.
- Stable accuracy can be obtained regardless of the length and thickness of the workpiece, and there is no variation in bending accuracy.
- Since it is 100 mm wide, it can be used repeatedly by shifting the damaged part.

High durability due to knit material

This super fiber is used in bulletproof vests and space suits.

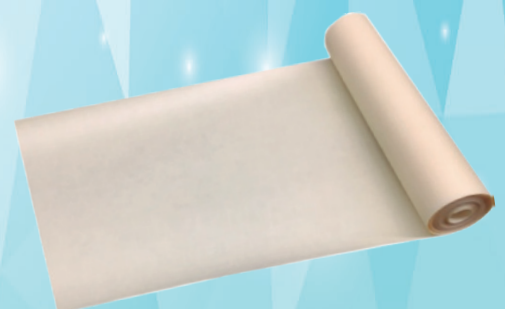
This super fiber, which is stronger than steel, is made into a stretchy knit weave to absorb the stretch pulled into the lower part of the V-groove, preventing tearing of the sheet and ensuring high durability.



MOBILON SHEET

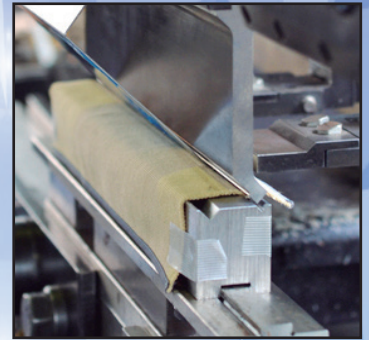
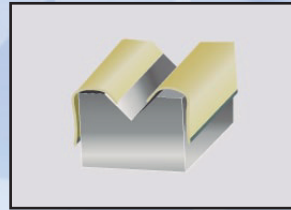
It excels in oil resistance and durability with a special resin sheet, while keeping costs low and affordable.

- Prevents scratches or marks on the work surface during sheet metal bending.
- Suitable for mirror-finished materials such as SUS and AL, and surface-treated materials.

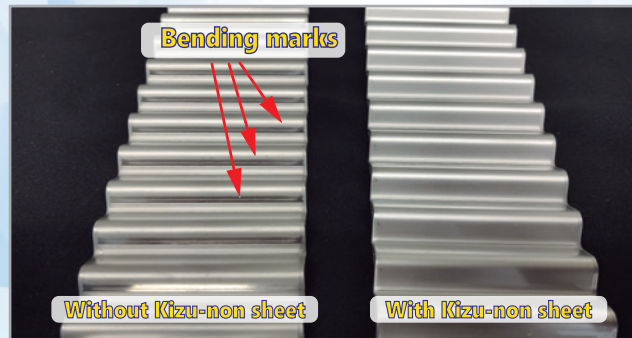


How to use

- Cover the V groove of the die without wrinkles and secure the front and back with tape.
- By shifting the damaged part of the sheet, it can be used repeatedly.
- Same tonnage and V-width as for normal processing.
*The thickness of the sheet is 1.0~1.2 mm, but since it is compressed to about 0.1~0.2 mm when pressurized, it can be used without widening the V width if the V width is 4 mm or more.
- For a die with a wide slot width, sheet from both sides of the die to the shoulder of the V.



Bending example



How to improve durability

1. Durability is improved by removing burrs and dross from the processed material before use.
2. Use the appropriate V width for the plate thickness; a smaller V width reduces durability, while a larger V width and shoulder radius increases durability.
3. 1V die has a larger shoulder R than 2V die, even with the same die width, and the sheet will be more durable.
(e.g., 1V die V10 shoulder R → 2R, 2V die shoulder R → 0.5R)
4. In the case of soft processed materials such as aluminum 52S (No.5000), weaving of the sheet fabric may occur.
This can be prevented by widening the V-groove and using a die with a large shoulder R.

High Quality & Technology For The Future

CONIC

<https://www.conic.co.jp/en/>

10-5 Taiheidai, Shoo-cho, Katsuta-gun, Okayama

709-4321 Japan

TEL: +81 868 38 6154 FAX: +81 868 38 6331

Email : tools@conic.co.jp

Dealer

For inquiries about this product, please contact us.