

Dear all,

I expect you are keeping well.

Finally, the rainy season is over and the summer is coming with the dazzling sun.

Before I knew it, I heard the cicada's voice and the season was completely "summer". ☺

I think this summer is a little different than usual.

Due to COVID-19, there are few beaches where you can swim, and the places where you can fully feel the summer are limited.

Sometimes you may want to spend your summer vacation at home. ☺



## "HANABI TAIKAI" (Fireworks Festival)

In Japan, fireworks festivals are held in various places in the summer.

The roots of fireworks originally spread from China to Europe as gunpowder, and were later introduced to Japan.

The start of the fireworks festival was the "Kyoho Great Famine (at 1732)".

Prices have risen due to the famine, epidemics (Cholera) have also spread, and the lives of *Edo (Tokyo)* citizens are said to have been miserable.

Then, in order to pray for the memorial service and the plague,

the 8th general, *Yoshimune Tokugawa*, held a Water God Festival in both countries and launched fireworks.

At first, it seems that the fireworks were as small as 20 shots, but this is said to be the origin of the fireworks festival.

In modern times, fireworks festivals are sometimes held in winter, but mostly in summer.

Unfortunately, due to COVID-19, most fireworks festivals were canceled this year.

The reason is that many people come to see the fireworks, and they get closer together, so it is said to prevent the spread of infection.

The Olympic Games will be held next year, so we hope we can get back to our normal lives sooner. ☺



# Blade style punch & Tip style large station punch

For Amada 3-1/2(D), 4-1/2(E) station tooling

Best for the contouring tool which is frequently used.

Economical tool because you need to replace the punch tip

## Blade Style Punch

### Punch Tip



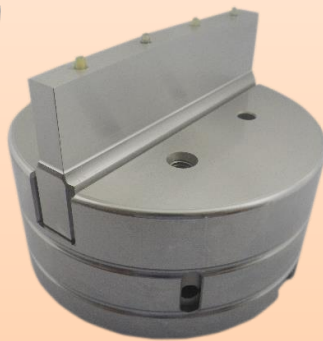
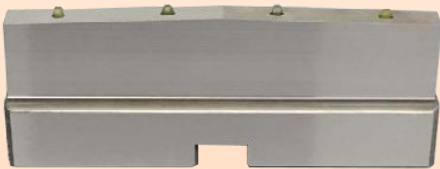
The punch in this photo is Conic Long Punch Type. (Option)

\*Only for αBlade guide

### [Finishing stock Punch Tip]

- 3-1/2" (High-speed steel, without Shear)  
Rectangle 6 x 8
- 4-1/2" (High-speed steel, with Roof Top Shear)  
Rectangle 10 x 110  
10 x 100  
6 x 110

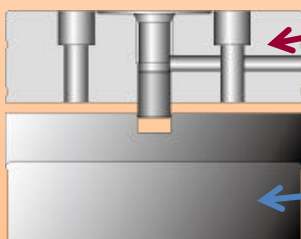
## Tip Style Large Station Punch



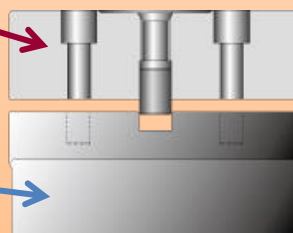
### [Finishing stock Punch Tip]

- 3-1/2" (D) (without Shear)  
Rectangle 10 x 80  
6 x 80  
5 x 80
- 4-1/2" (E) ( with Roof Top Shear)  
Rectangle 10 x 110  
10 x 100  
6 x 110  
6 x 100  
5 x 110

### Air Blow Type



### Standard Type



Punch Holder

Punch Tip

## 【Specification】

- Compatibility: Compatible with tools made by Amada.
- Maximum material thickness: Mild Steel, Aluminum and the like 6 mm / Stainless and the like 4.5 mm.
- Material of the punch tip part: HSS.
- Measures for the durability of the punch (option).

You can choose these specifications as below.

SDP (Super Dry Punch) / CLP (Conic Long Life Punch) / CHP (Conic Hard Punch)