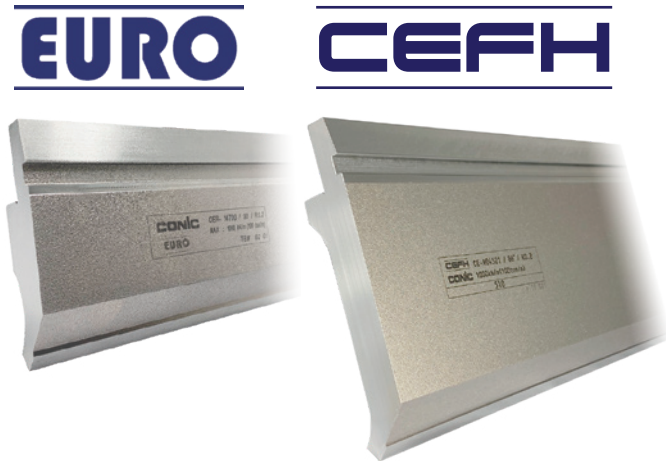


CONIC PRODUCTS

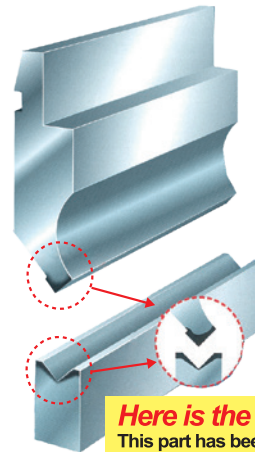
This time, we have summarized the conic products introduced in the Technical Information for each bending task.

LONG LIFE TOOL *See Vol. PB-15

The “EURO” “CEFH” tool has a hardened bending edge and achieves about 4 times longer life than conventional tools. Since the wear amount is extremely small, re-grinding is almost unnecessary, and the sheet metal accuracy is stable. Ideal for SUS and thick plate processing.



EURO / CEFH series tool is
 Hardened cutting edge (forming part) from **HRC 54° to 60°!**

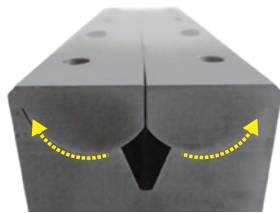
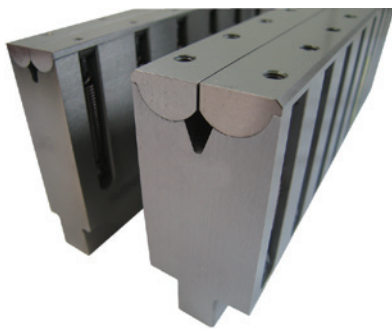


Here is the point!
 This part has been further hardened by our unique technology.

ELIMINATE BENDING SCRATCHES *See Vol. PB-16

Slip scratches are prevented by using a tool that protects against scratches.

NS-Bend



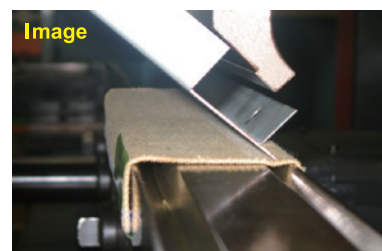
Example of bending SUS T=1.5



The die opens like a wing, eliminating scratches on the shoulder.

Bending scratches can be prevented simply by placing it on the die, allowing quick preparation in advance.

SPECIAL SHEET (*The photo is KIZU-NON SHEET)

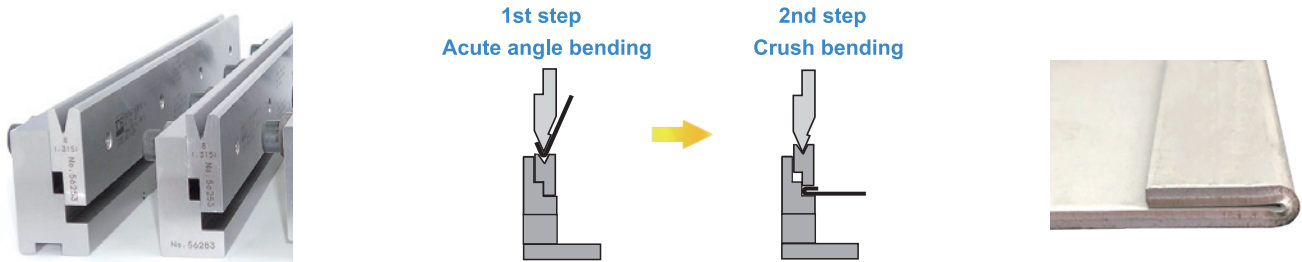


SMOOTH SPECIAL BENDING

Depending on the product dimensions and accuracy, it may not be possible to bend at once, but may be bent multiple times or use multiple tools. We propose the use of special type to improve efficiency, safety and quality.

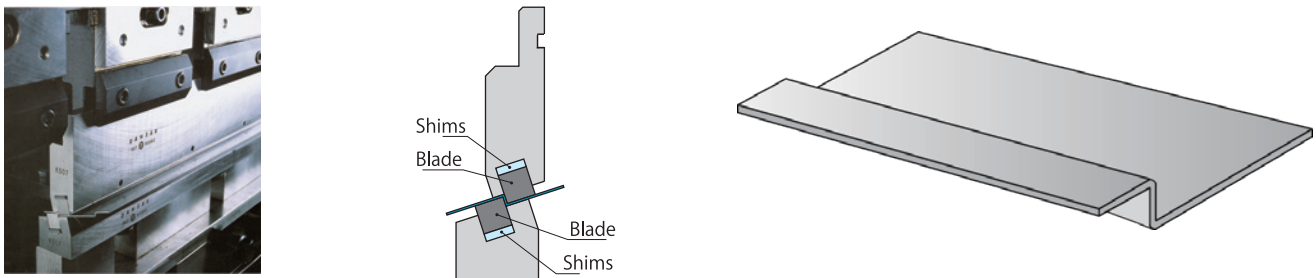
HEMMING BENDING TOOL "FEATHER HEMMING" *See Vol. PB-12

Two steps of hemming bending can be processed with one type of tool. It supports from corner hemming to split hemming, and adjustment is easily possible even in environments with tonnage variations of hydraulic machines.



TOOL FOR STEP BENDING "DANSAR" *See Vol. PB-12

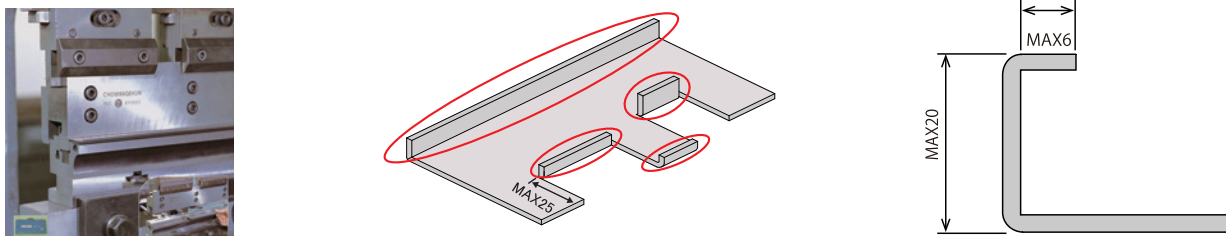
You can easily adjust the height of the steps by simply inserting a shim with the same thickness as the height of the steps. Even if there are variations in the tonnage of hydraulic machines, adjustment is easy and dimensional accuracy is stable.



TOOL FOR SMALL FLANGE BENDING "CHOMMAGEKUN" *See Vol. PB-13

Bending with a small rise (1.5 times the plate thickness) can be processed quickly.

When changing the plate thickness, you can easily change the bending setting by simply replacing the shim with the same thickness as the product.



REDUCES TOOL SETUP TIME

By improving the man-hours for mounting and removing the tool, smoother bending can be realized.

ONE TOUCH CLAMP DIE HOLDER

All tools on the holder can be fixed with on lever.



ECO-CLAMP

A clamp that can be attached to both one-touch type and with safety groove type punches.



***Please contact us in advance as some countries may not be available for sale.**

For More information,
please contact
CONIC tool sales desk.

CONIC Co., Ltd.
10-5 Taiheidai, Shoo-cho, Katsuta-gun,
Okayama 709-4321 Japan
Email: tools@conic.co.jp
<https://www.conic.co.jp>

CONIC PRECISION Co., Ltd.
55/22 Moo 4, Buengkumphroy, Lumlukka,
Phatumthani 12150 Thailand
TEL: (662) 159-9870 FAX: (662) 159-9872
Email: conic_thai@conic.co.jp