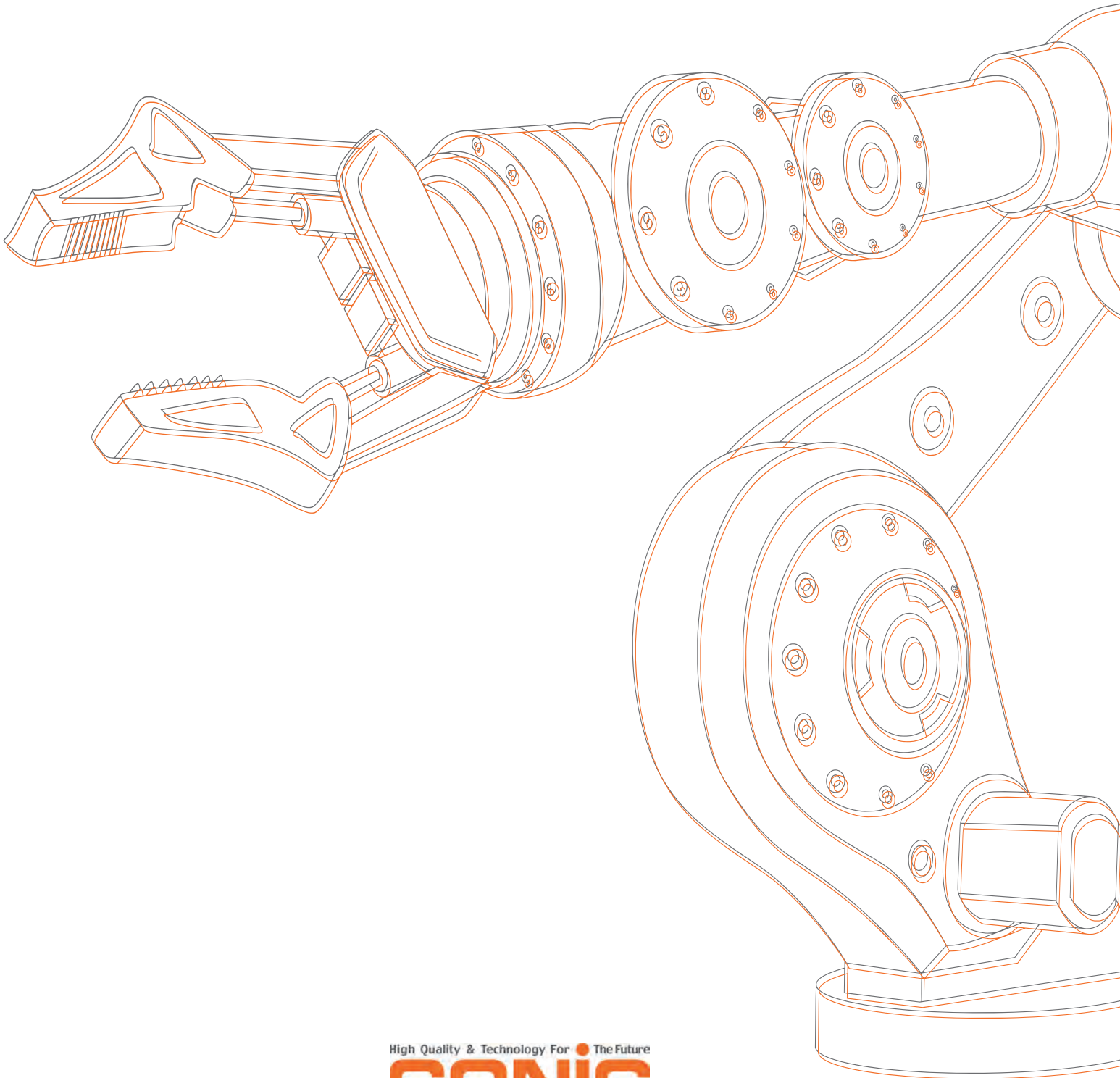


FACTORY AUTOMATION

Sheet Metal



High Quality & Technology For The Future
CONIC



Line up

Turret punch press tools

■ Conic supplies following tools.

- Amada Thick/Thin turret type
- Trumpf type
- Murata type (144, Vulcan)
- Nissinbo type
- Salvagnini type

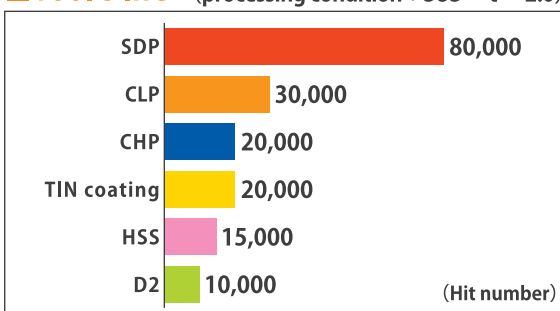
Surface treatments/coatings

Original tools

■ Depending on the material we recommend to use the appropriate tools.

- Super Dry Punch (SDP)
- Conic Hard Punch(CHP)
- Conic Long life Punch(CLP)

■ Tool's life (processing condition : SUS t =2.0)



■ Surface treatment (Feature)

Total performance	Type of treatment	Aptitude			
		Stainless	Mild steel	Aluminum	Galvanised
High performance ⇕ Cost performance	Super Dry Punch (SDP)	★★★★★	★★★★★	★★★	★★★
	Conic Long Life Punch(CLP)	★★★★	★★★★★	★★★★★	★★★★★
	Conic Hard Punch (CHP)	★★★	★★★★	★★★★★	★★★★
	Standard High Speed Steel	★★	★★★	★★★	★★★
	Standard D2 material	★	★	★★	★

Various idea tools

Forming tools



Conic technical center

The punching machine for test

■ We check finished tools which you ordered with the newest turret punch press. Also we develop new products and sheet metal processing technologies.



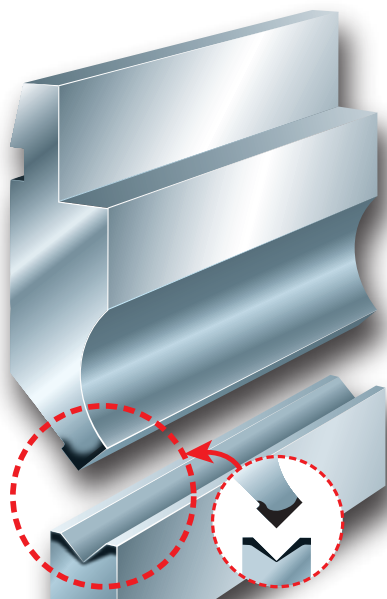


Line up

Pressbrake tools

■ Conic supplies following tools

- Amada type one touch
- Maru type
- Amada type with fall prevention square groove
- Aizawa type
- Komatsu type
- Others
- Toyo type



High-hardness was realized with our original technologies.

Conventional tool is HRC45°~49°

The bending edge hardness of **EURO** series tool is increased to HRC54°~60°.

It is extremely strong against wear and has high durability.

Available both type of clamp



one touch



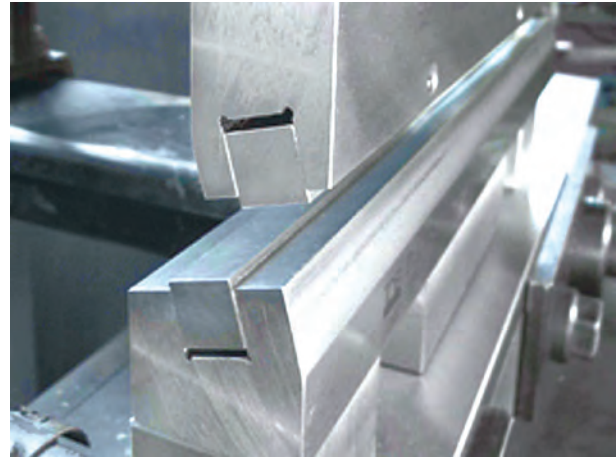
with fall prevention square groove

Various idea tools

Special tools



▲NSBend



▲DANSAR

Others



▲Eco clamp



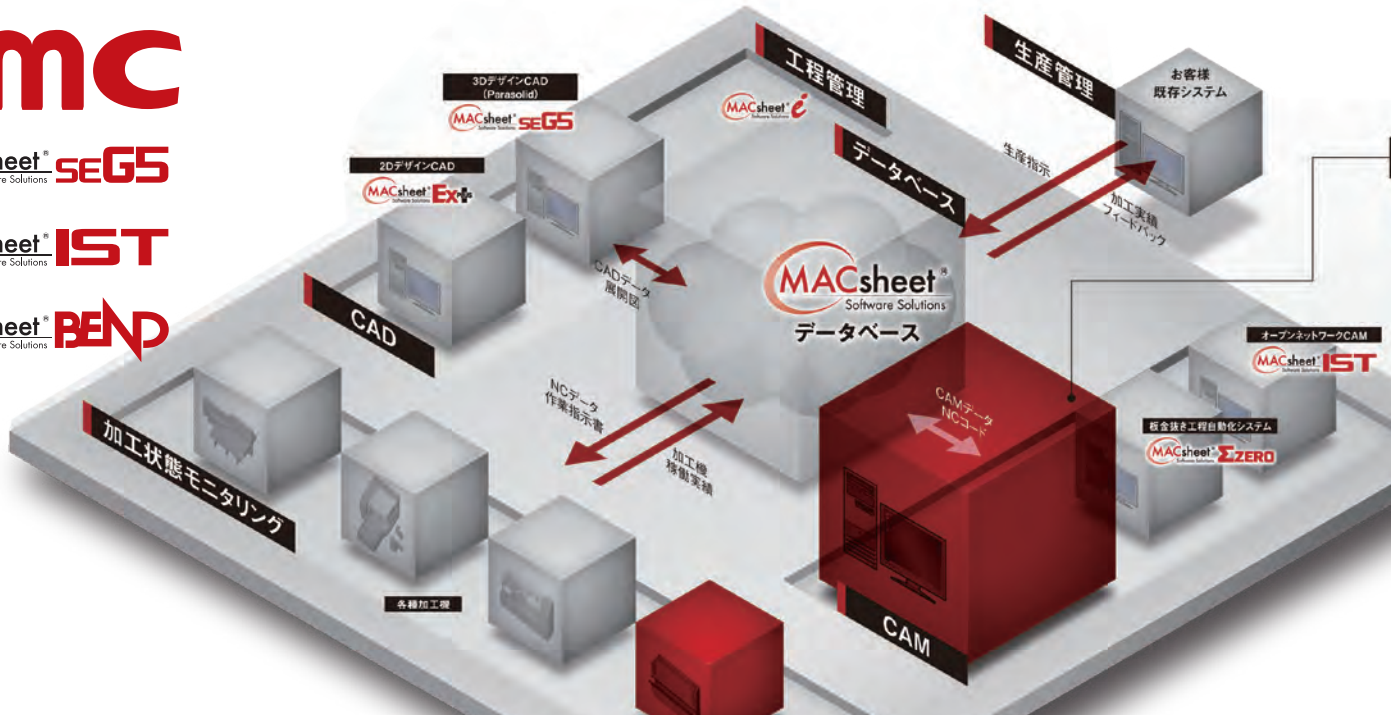
▲Protection fabric sheet for anti-die scratch

CMC

MACsheet®
Software Solutions **SE G5**

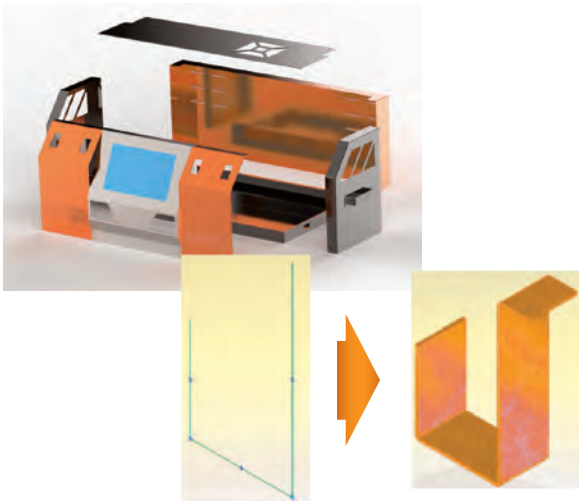
MACsheet®
Software Solutions **IST**

MACsheet®
Software Solutions **BEND**



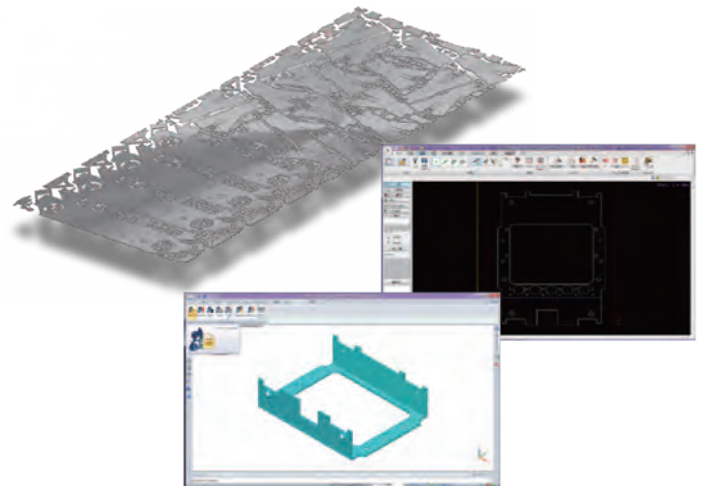
3D design CAD for sheet metal processing **SE G5**

■ You can improve the quality of sheet metal processing.



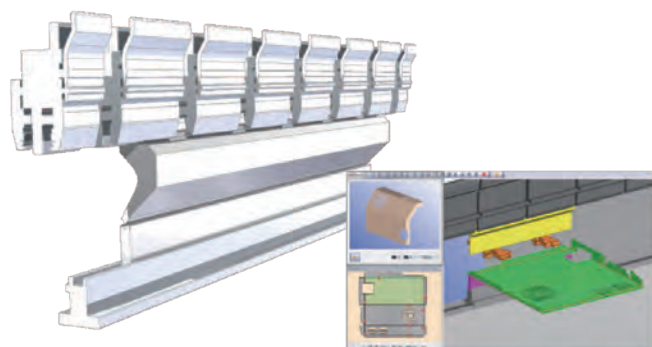
Open Network CAM **IST**

■ sheet metal process management.



Bend simulation system **BEND**

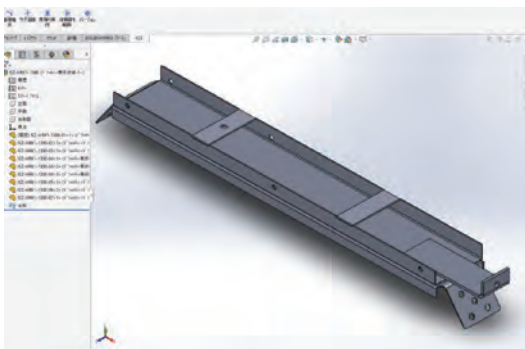
■ 3D BendCAM improves bending work efficiently.





Cost calculation while designing
IQ3-SW

■ 3D CAD cost simulation.



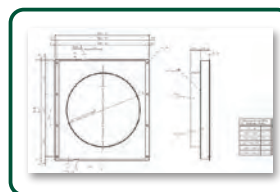
automatic quotation
from 2D drawing
iQ3-Nazo

■ Cost/Estimate software for sheet metal processing.

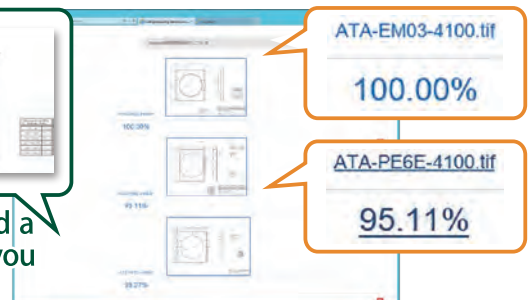


high efficiency by serching
similer drawing
IQ1-VS

■ Easy searching of similar drawings.



You can upload a drawing which you want to search.



TRUMPF



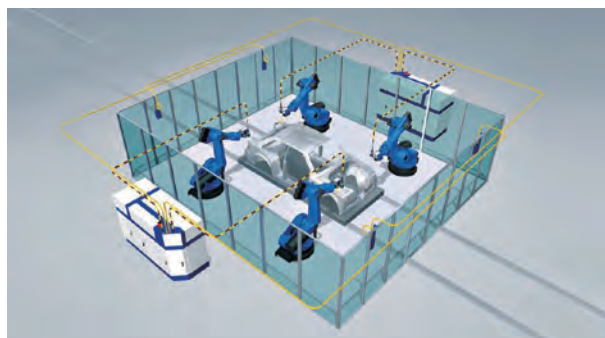
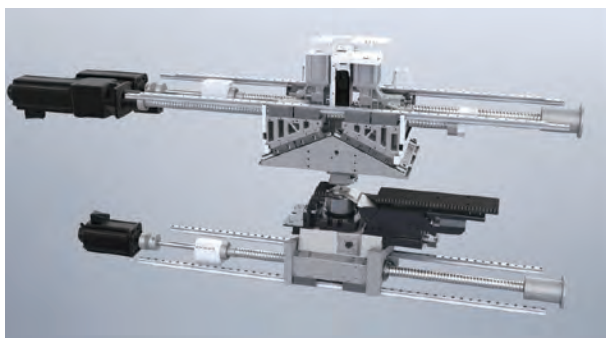
TruMatic 1000



▶ Punch laser combination machine

TruMatic 1000 fiber

■ The TruMatic 1000 fiber is an innovative laser machine that punches, forms, and creates threads – with effective automation in minimal space.

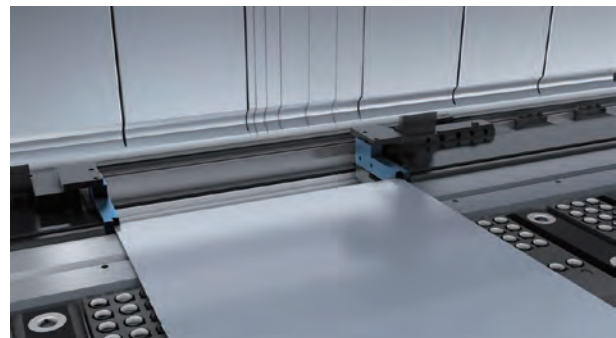
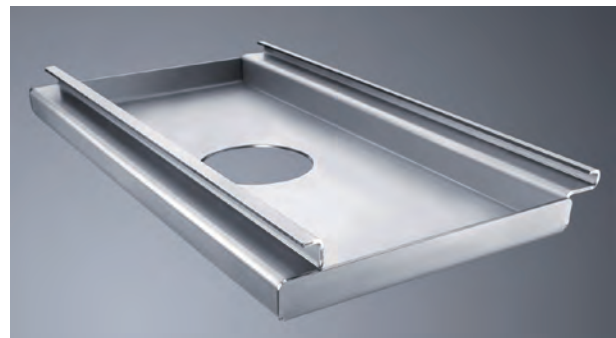
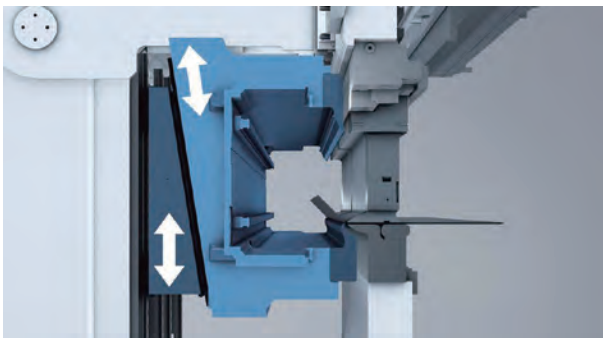




Bending Machine

TruBend Center 5030

■ Semi-automatic panel bending.





MITSUBISHI ELECTRIC

True standard machines
exceeding its own limits
HV2R

■ New laser head reduced piercing time and improved processing performance and productivity very high.



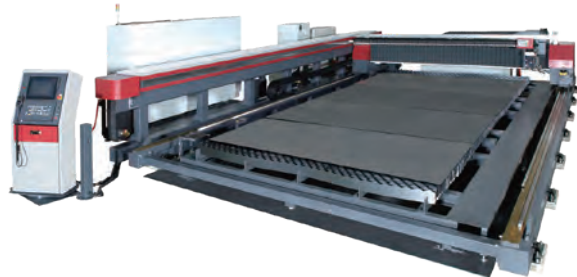
Towards a new type of
3D processing
VZ10

■ Focus to one point from any direction type. VZ10 increased critical speeds at corner sections and shortened processing times.



Culmination of laser processings
ML6030XL

■ Large-scale laser processing machines offer the performance comparable to other high-speed versatile laser machines.



Automated process of laser machine

SR/SR-F SCX-SR/SR-F series

Automated process of laser machine works for high efficiency and flexible work planning.



Laser accessory

Compressor



Laser accessory

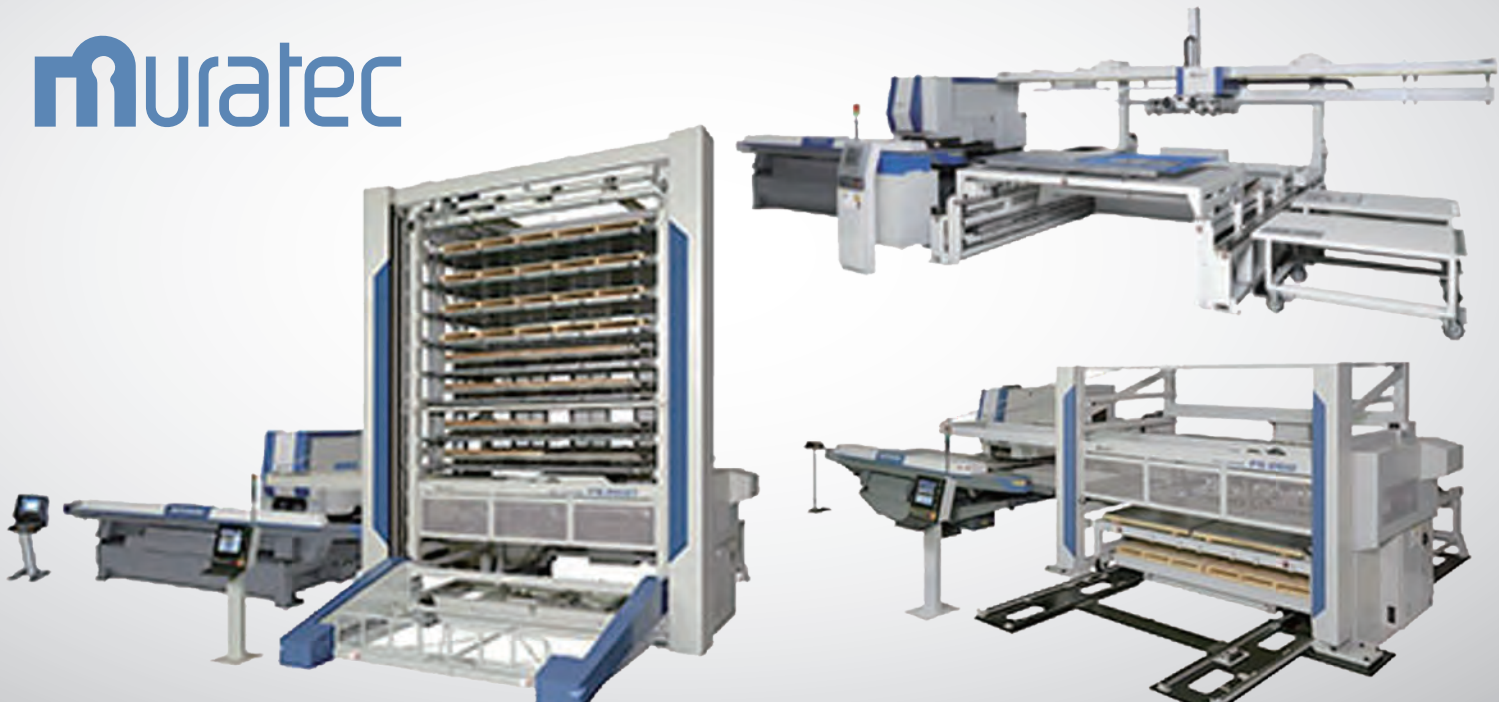
Dust collector



Laser accessory

Booster



▲ Turret punch press

MOTORUM

■ CNC Servo Motor Driven Ram Turret Punch Press.



▲ Automatic tool grinder

MTA-170α

■ Tool regrinder / Tool grinder for turret punch press tools.



▲ Press brake

BB4013 / BH13530



▲BB4013

▲BH13530

▲ Special press brake

3points / MH



▲3points

▲MH



**AC servo drive press brake
YSP200-30**

Reduction in maintenance.
We suggest various equipment
such as automatic punch press
tool changing machine.

dedicated machine
**Dedicated machine
with robot**



**cost reduction
by overhauling machines**
Overhaul

■ Repair of press machines and overhaul.



Before overhauling

After overhauling

speed & quality
**NC high-speed
notching machine**

■ Notching press of Stator/Rotor core
laminations for Generator or Motor.



**Born from years of
experience and technology**
High power generator & Riveter

■ Using mainly as caulking machine
of Truck.



Komatsu



Long-life, High cutting rake angle SHS

■ Hydraulic shearing machine of easy to use with the highest degree of precision. "Cutting" with precision, speed and easy to use.



Inovative technology servo press H1F-1

■ Combining the advanced CNC with the hybrid drive mechanism, both high productivity and high accuracy forming have been achieved.

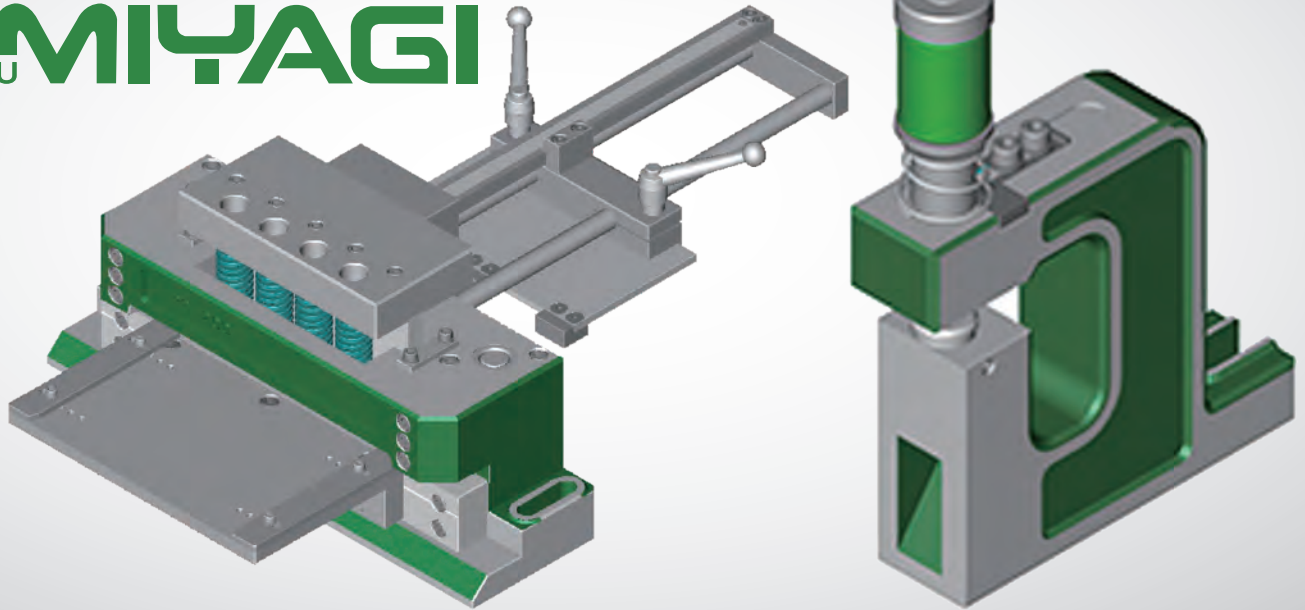


Reducing cutting cost TFP

■ First in the world ! Cartridge style consumables.

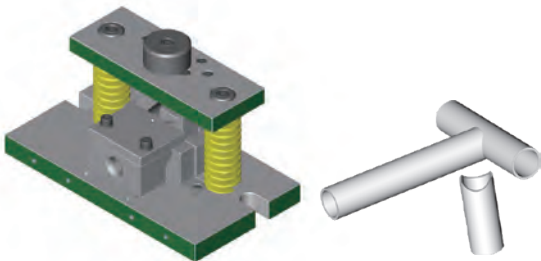


CHUBU **MIYAGI**



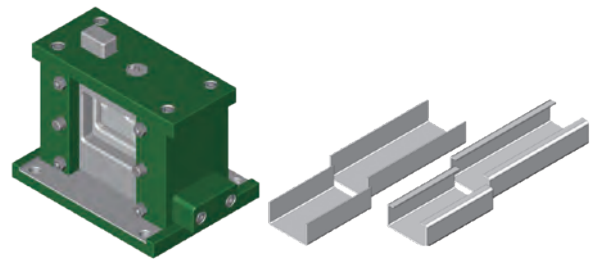
▶ Notching end face of round pipe

TYPE RC



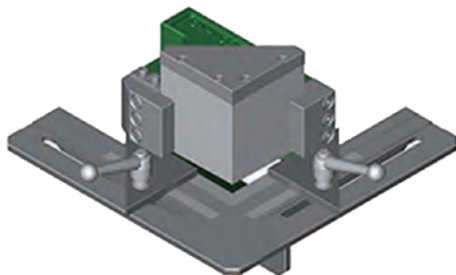
▶ Single cutting of lightweight channel steel

TYPE SC



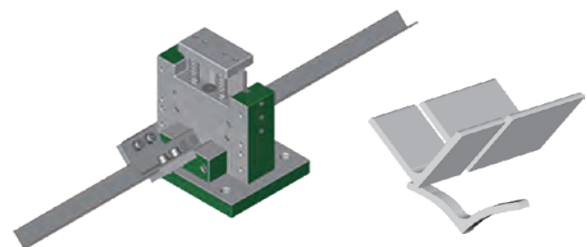
▶ Notching for a 90 degree corner

TYPE CN



▶ Angle cutting

TYPE ACW



AAA 株式会社 相澤鐵工所



▶ The first "Servo" Shear
in the world

ASV

■ The cutting speed is variable.
Large reduction of noise and vibration.



▶ Cooperate with CAD/CAM
and IoT is available

APB

■ High repeatability on depth control and
The fine adjustment mechanism for
products.



▶ CNC press brake

APL

■ IDEA CNC control with 3D Graphics.
Ram repeatability $\pm 0.005\text{mm}$.





株式会社 エステーリンク

▶ Deburr without take off the coating

METAL-ESTE 1000/600s/1300

■ Metal sheet company pursuit for the deburring machine for Metal sheet company.



▲METAL-ESTE 1000



▲METAL-ESTE 600s



▲METAL-ESTE 1300

▶ Multi-functional and convenient

METAL-HANDS ^{MH-101/}MHS-101

■ Free deburring as you desire. Handy deburring machine.



▲MH-101

▲MHS-101

▶ For various deburring

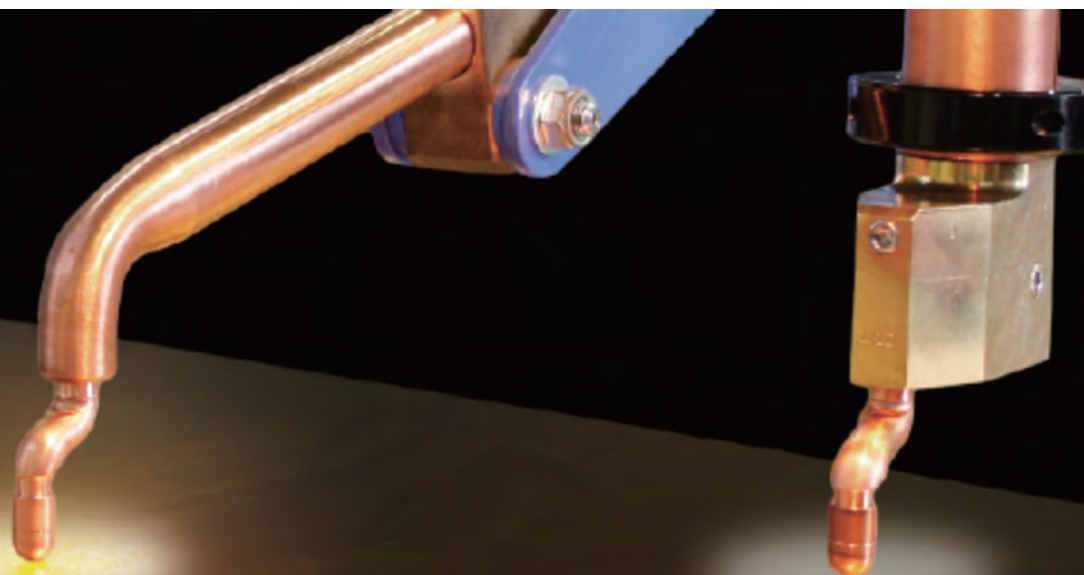
METAL-TOUCH

■ Saving Space & Cost.
Everyone could work easier with this.



▲MHS-101

MACHINE DESIGN & PRODUCT DEVELOPMENT BUSINESS SAFETY
koyo giken



Best-selling standard welder **NK-21series**

■ Table size=800x1000mm
 Best-selling standard table spot welder.



Best for large workpieces **NK-03series**

■ Table size=1000x1500mm
 It is ideal to process large products.



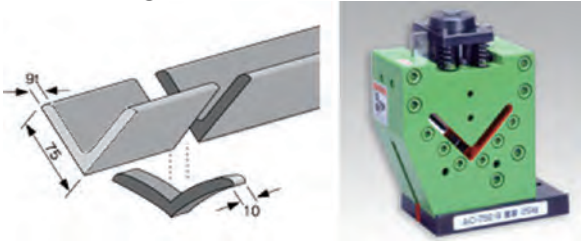
TAKEDA



Angle cutting

AC-75E

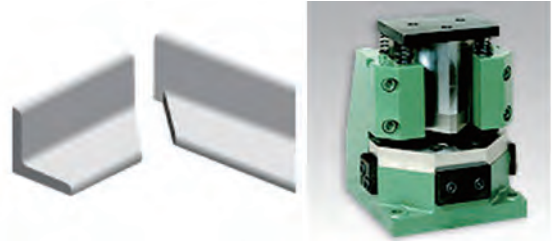
■ It guarantees high accuracy by W cutting.



V notching B

NB-75S

■ Easy to notch V-shaped angle.



Square shaped pipe cutting

PC-5050A

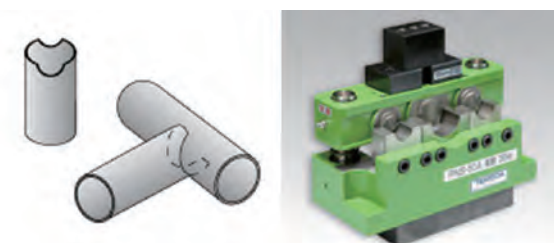
■ It has a sharp blade.



Pipe notching

PNS-50A

■ Best application for pipe knotching.



TOEI 東栄工業株式会社

Electric tapping machine WIDE

Tap size M3 ~ M16

Operating range is 900mm radius, fluctuation range is 480mm.

- Accurate measurement for chamfer is realized

Digital Chamfer Caliper Gauge

Accurate measurement for a 45 degree chamfer. It can measure a inside diameter, a outside diameter and steps.



▲C4505

- Digital gauge for a 45 degree chamfer and radius

Digital C&R Caliper Gauge

It Measures a small 45 degree chamfer and radius accurately. Absolute and relative measurement functions are available.



▲CR1525

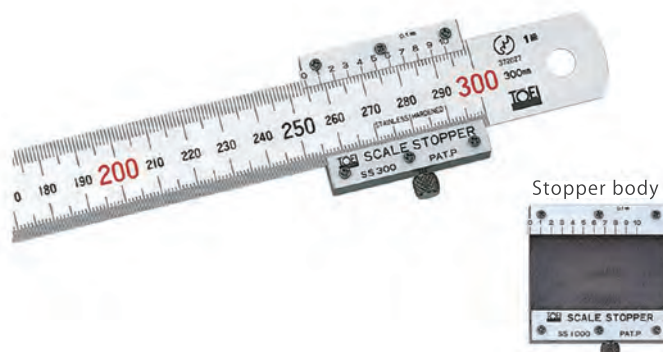
- The first miniaturized Digital Protractor in the world
- ## DPM-2 Digital Protractor

Real time reading of the bending angle.



- Accurate measurement
- ## Scale stopper

Vernier scale with stopper is easy to read to within 0.1mm.





LEO-M

■ Realized long-life by using high quality blade of cabalt high speed steel.



width x thickness	tpi						
	0.75/1.25	1.0/1.4	1.4/2	2/3	3/4	4/6	5/8
27 x 0.90				●	●	●	●
27 x 1.10				●	●		
34 x 1.10			●	●	●	●	●
41 x 1.30				●	●	●	●
54 x 1.30			●	●	●	●	
54 x 1.60	●	●	●	●	●	●	
67 x 1.60	●	●	●	●	●	●	
80 x 1.60	●	●	●	●	●		
100 x 1.60	●						

► Material



structural steel • tempered steel • spring steel • low alloyed hot-work steel • nitride steel • high alloyed hot-work steel • unalloyed tool steel • cold-work steel • high speed steel • cast iron • light rust/acid-resist steel • heavy rust/ acid-resist steel • heat-resist steel • aluminum • copper • carbon

LEO-V

■ Realized long-life by using high quality blade of cabalt high speed steel. Longlife for structure steel.



width x thickness	tpi					
	3/4	4/6	5/8	6/10	8/12	10/14
20 x 0.90		●	●	●	●	●
27 x 0.90	●	●	●	●	●	●
27 x 1.10		●				
34 x 1.10	●	●	●	●	●	
41 x 1.30	●	●	●	●		
54 x 1.30				●		

► Material



structural steel • tempered steel • spring steel • low alloyed hot-work steel • nitride steel • high alloyed hot-work steel • unalloyed tool steel • cold-work steel • high speed steel • cast iron • light rust/acid-resist steel • heavy rust/ acid-resist steel • heat-resist steel • aluminum • copper • carbon



◎ We have various bandsaw blade.

In addition to the above LEO-MV, we have a bandsaw blade which also supports various materials. If you have any problems about bandsaw processing, please contact us.

High Quality & Technology For The Future
CONIC



▶ We will purchase machines not in use.

Purchasing and selling of used machines for sheet metal processing

■ "CONIC UM PROJECT" we buy your unused machine in high price. Who desires to buy and sell on consignment, please feel free to contact us.

Used machine sales

- ◎ CONIC give the high quality maintenance and re-paint on the machine.
- ◎ We provide as is condition used machines at a low price.
- ◎ We will instruct you how to do transportation, installation and trial operation.
- ◎ We provide after-sales services for repair and arrangement of consumables and so on.



Purchasing used machine

- ◎ Good assesment, estimate and purchase at a high price.
- ◎ Quick cash settlement
- ◎ smooth collecting operation



Process of used machine purchase



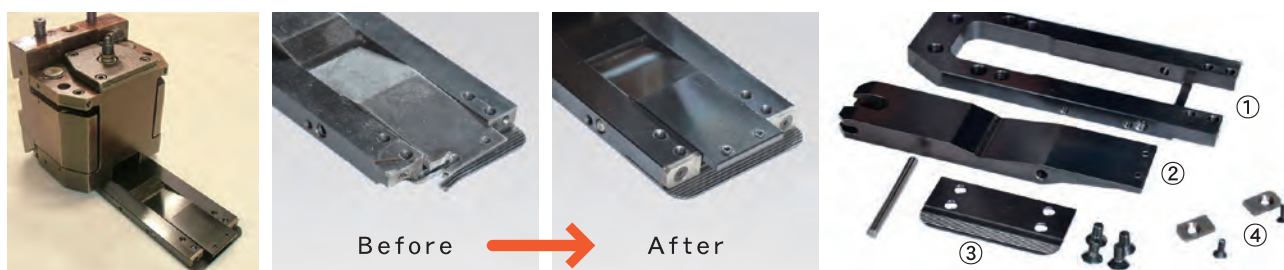
The assessment request form can be downloaded from our website.
⇒ http://www.conic.co.jp/fa_products/um.html

◎You can use alliance credit.

◎We also export overseas.

Best for cost reducing.

Clamp repairs



"AAA item" can also be repaired depending on the condition.

No.	Product name	Air type	Hydraulic type	ARIES222・224/S94C	OCTO	Confirmation items
①	Clamp base (M6Type)	P-1	H-1	A-1	E-1	We don't have M5 type.
②	Clamper	P-2	H-2	A-2	E-2	
③	Clamp plate (M5&M6Type)	P-3	H-3	A-3	E-3	P/H are common, only M5 for A/E
④	Tip (L&R=1set)	P-4	H-4	A-4	E-4	P/H/E use common parts.
⑤	Assembling charge	—	—	—	—	
⑥	Assembly【①~④】	P-6	H-6	A-6	E-6	
⑦	Standard repair【①~⑤】	P-7	H-7	A-7	E-7	

Sales category

- **Punching Machine&Tool**
- **Bending Machine&Tool**
- **LASER cutting Machine**
- **Shearing Machine**
- **Software**
- **e.t.c.**

※This catalog is for the Japanese market.
※In other countries please contact us.



CONIC CO., LTD

10-5 Taihei-dai, Shoo-cho, Katsuta-gun, Okayama 709-4321 Japan

Tel: (+81) 868 38 6154 | Fax: (+81) 868 38 6331

Email: tools@conic.co.jp | Website: www.conic.co.jp

CONIC PRECISION CO., LTD

55/22 moo 4. Buengkumphroy, Lumlukka, Phatumthani 12150 Thailand

Tel: (+66) 2 159 9870-1 | Fax: (+66) 2 159 9872

Email: conic_thai@conic.co.jp | Website: www.conic.co.jp/thai/

THE REPRESENTATIVE OFFICE OF CONIC CO., LTD. IN HO CHI MINH CITY

4F VIN Office building | No. 362/19 Ung Van Khiem St., Ward 25, Binh Thanh Dist., H.C.M.C, Vietnam

Tel: (+84) 28 7300 0250

Email: conic_vn@conic.co.jp

Dealer