

14. Marking (Stamping)



■ Usage

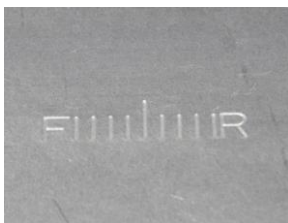
Used for stamping identification mark and lot number.

engraving a pattern on a workpiece.

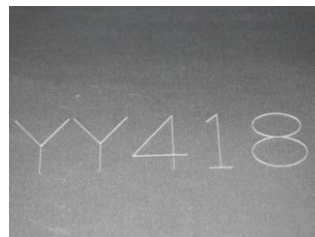
■ Shapes Overview

Designated characters and patterns are marked on the tool and punched on one side of the workpiece.

Examples



Speech balance indication mark of audio equipment.



Product management mark meaning manufacturing factory and lot number.

Request for a quotation is [here](#).