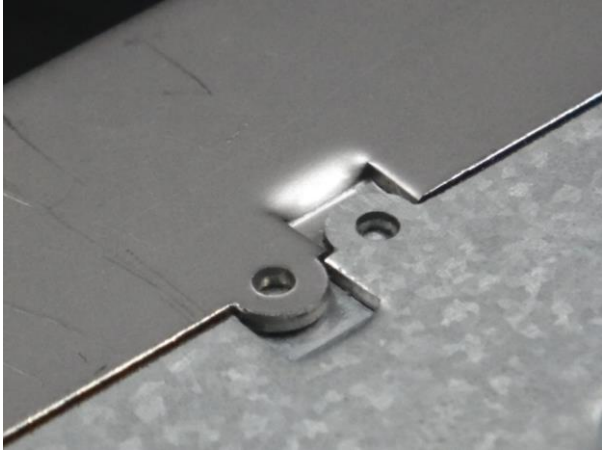


## 13. Easy Joint Tool



### ■ Usage

Used for joint of workpieces except using for water area

### ■ Shapes Overview

Workpieces are jointed by engaging the concavo and convex parts punched by the forming tool each other.

As this joint of workpieces is not welding, you can realize comprehensive cost reduction in sheet metal processing.

## Examples



It can join different materials.  
Plated steel sheet + stainless steel sheet.



If it is jointed, you can not disassemble without tools such as a flathead screwdriver.

Request for a quotation is [here](#).