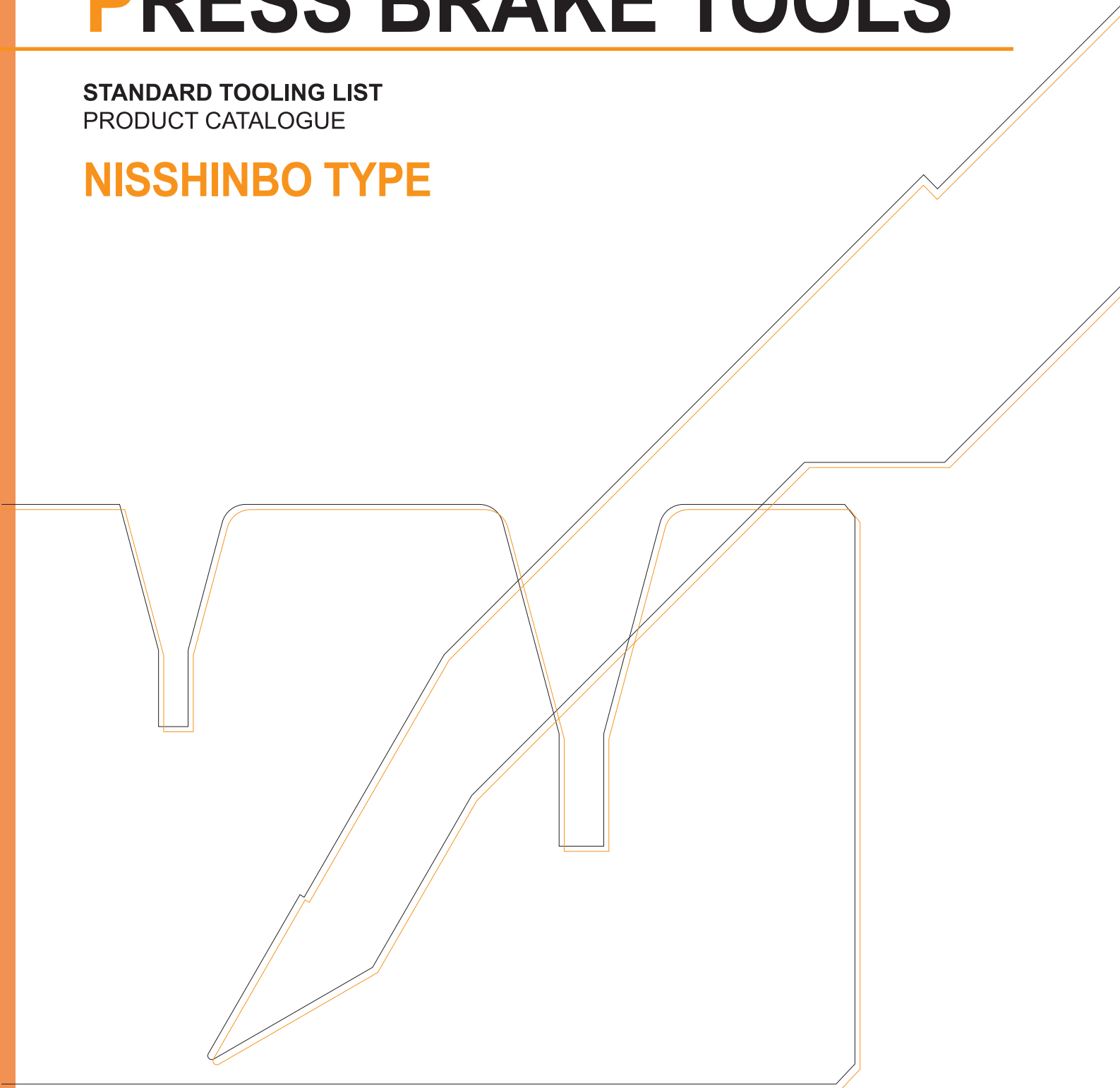


PRESS BRAKE TOOLS

STANDARD TOOLING LIST
PRODUCT CATALOGUE

NISSHINBO TYPE



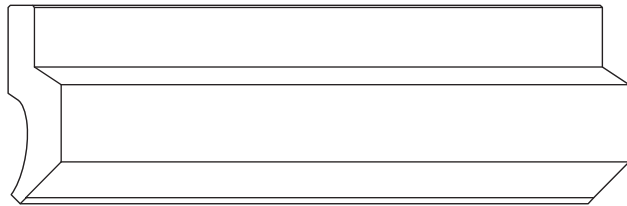
High Quality & Technology For  The Future
CONIC

INDEX

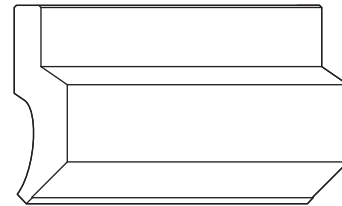
INFORMATION	03
CLAMP TYPE	04
STANDARD PUNCH (NP02)	05
STANDARD PUNCH (NP03)	06
STANDARD PUNCH (NP04)	07
STANDARD PUNCH (NP05)	08
STANDARD PUNCH (NP06)	09
SPECIAL PUNCH (NP10)	10
SPECIAL PUNCH (NP10)	11
SPECIAL PUNCH (NP11)	11
STANDARD DIE (V00-25)	12-13
STANDARD DIE (V32-100)	14
STANDARD 2V DIE	15
HIGH HEIGHT DIE	16-17
BEND CHART	18
ORDER SHEET	19

PUNCH

■ TOOL LENGTH

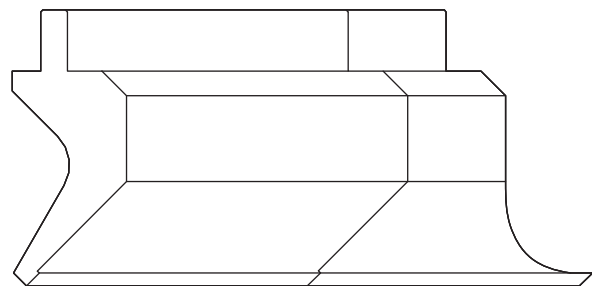
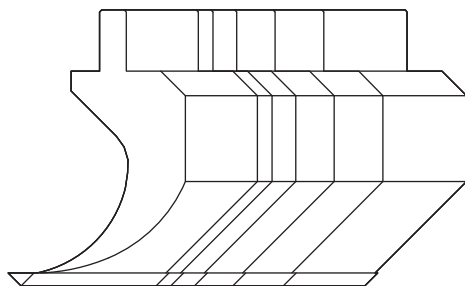


Type L 835 mm



Type S 415 mm

■ SECTIONING



■ SECTIONING (PUNCH)

Type L: 835mm Type S: 415mm

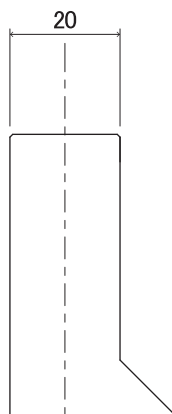
SECTIONING A 10 ▪ 15 ▪ 20 ▪ 40 ▪ 50 ▪ 100 (Right end) ▪ 100 (Left end) ▪ 200 ▪ 300 (Total 835mm)

■ SECTIONING (DIE)

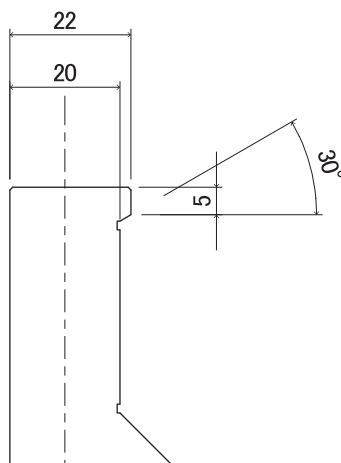
10 ▪ 15 ▪ 20 ▪ 40 ▪ 50 ▪ 100 ▪ 200 ▪ 400 (Total 835mm)

CLAMP TYPE

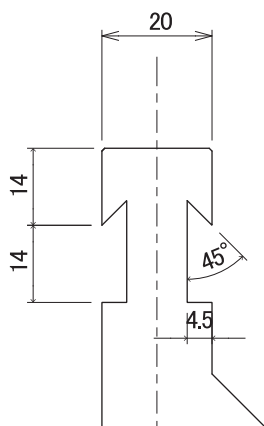
■ STANDARD-TYPE



■ S-TYPE



■ R-TYPE



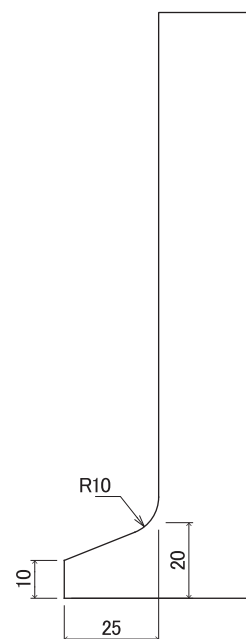
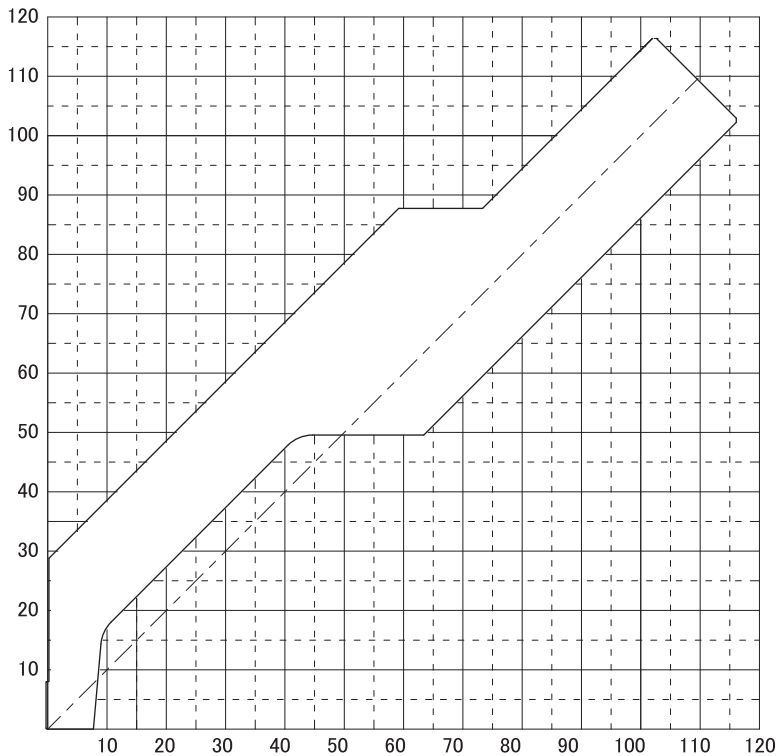
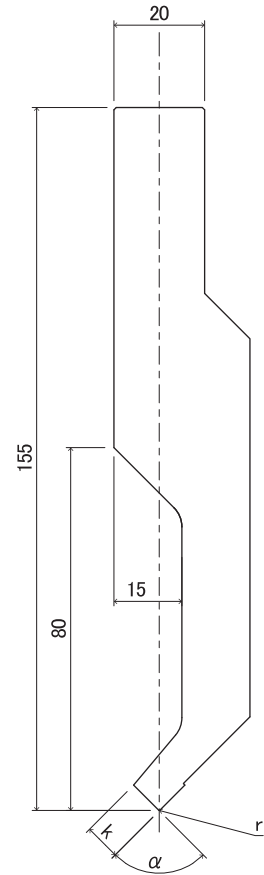
STANDARD PUNCH (NP02)

Material: **SCM440** Hardness: **HRC47 ± 3**

L: 835mm S: 415mm

Sectioning A

Type	α	r (mm)	k (mm)	Max (ton/m)	Product No.
	Angle				
NP02	85	0.2	6	20	P201
		0.4			P202
		1.0			P203
		0.2	8		P211
		0.4			P212
		1.0			P213
	88	0.2	6	20	P221
		0.4			P222
		1.0			P223
		0.2	8		P231
		0.4			P232
		1.0			P233
	90	0.2	6	20	P241
			8	35	P251



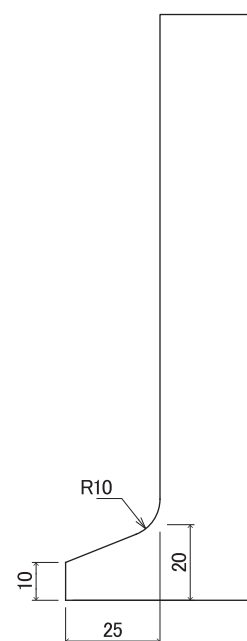
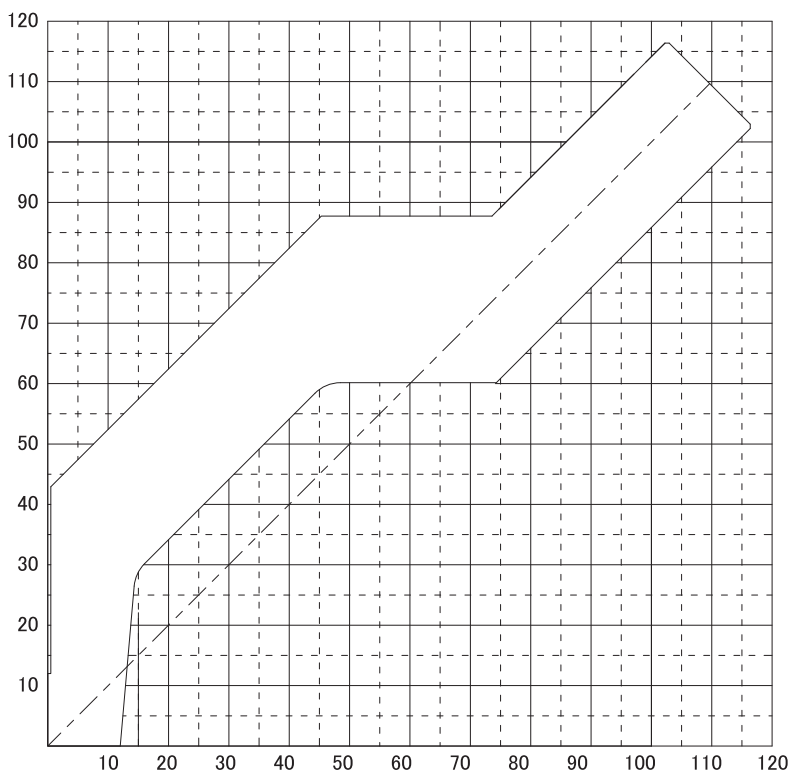
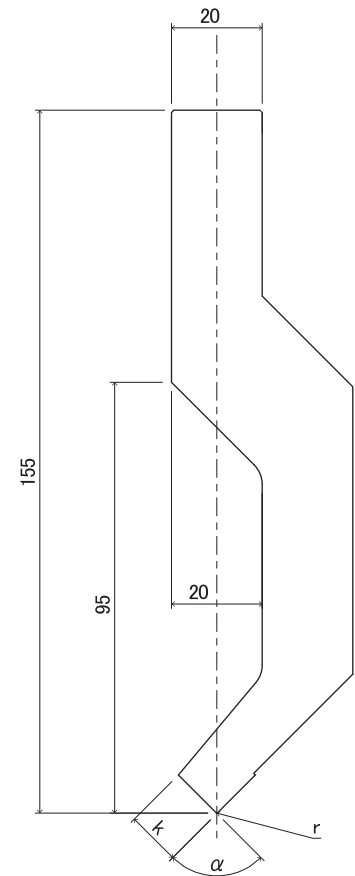
STANDARD PUNCH (NP03)

Material: **SCM440** Hardness: **HRC47 ± 3**

L: 835mm S: 415mm

Sectioning A

Type	α	r (mm)	k (mm)	Max (ton/m)	Product No.
	Angle				
NP03	85	0.2	9	25	P301
		0.4			P302
		1.0			P303
		0.2	12		P311
		0.4			P312
		1.0			P313
	88	0.2	9	25	P321
		0.4			P322
		1.0			P323
		0.2	12		P331
		0.4			P332
	1.0	P333			
	90	0.2	9	25	P341
			12		P351



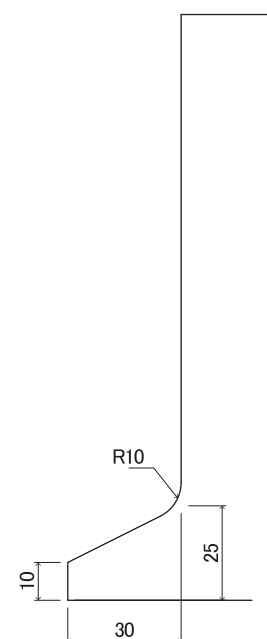
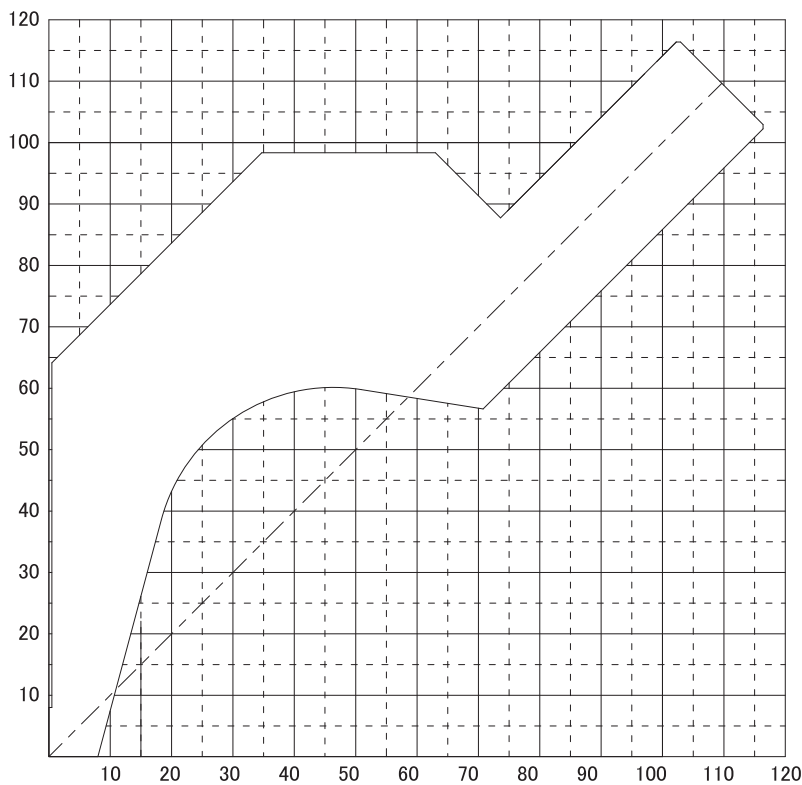
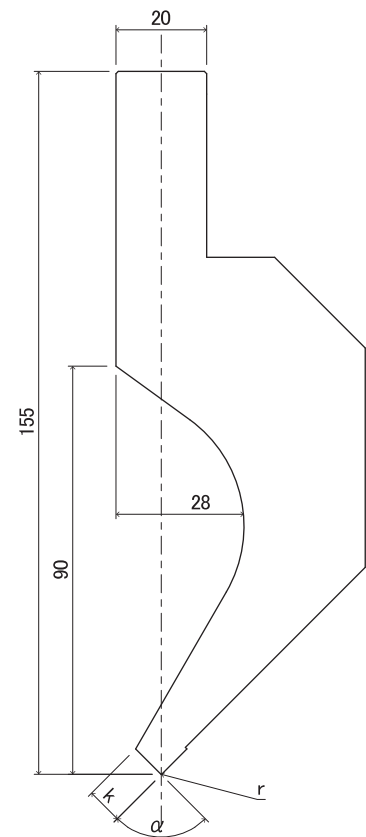
STANDARD PUNCH (NP04)

Material: **SCM440** Hardness: **HRC47 ± 3**

L: 835mm S: 415mm

Sectioning A

Type	α	r (mm)	k (mm)	Max (ton/m)	Product No.
	Angle				
NP04	85	0.2	6	55	P401
		0.4			P402
		1.0			P403
		0.2	8		P411
		0.4			P412
		1.0			P413
	88	0.2	6	55	P421
		0.4			P422
		1.0			P423
		0.2	8		P431
		0.4			P432
		1.0			P433
	90	0.2	6	55	P441
			8	65	P451



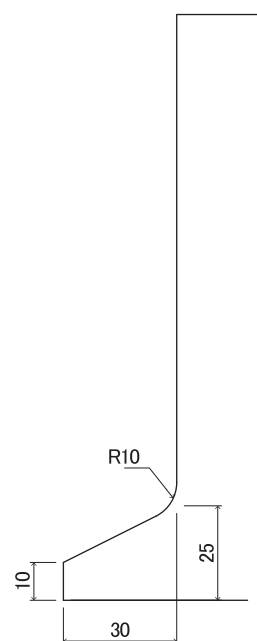
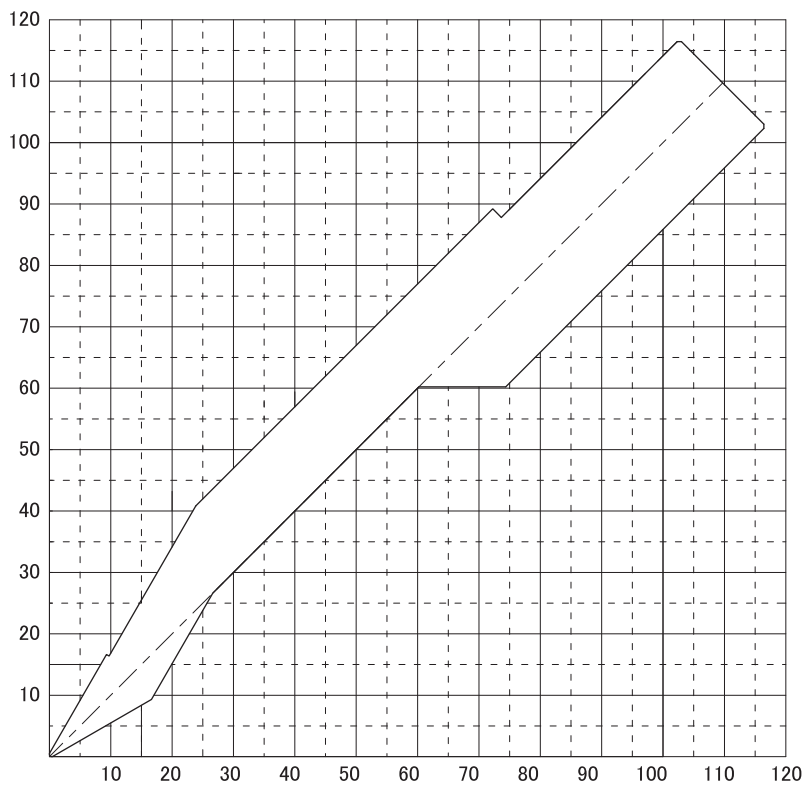
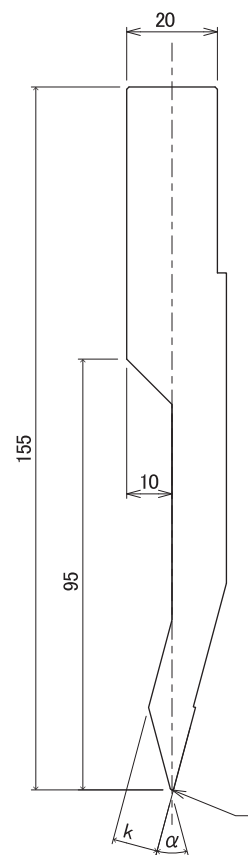
STANDARD PUNCH (NP05)

Material: **SCM440** Hardness: **HRC47 ± 3**

L: 835mm S: 415mm

Sectioning A

Type	α	r (mm)	k (mm)	Max (ton/m)	Product No.
	Angle				
NP05	30	0.2	10	50	P501
		0.4			P502
		1.0			P503



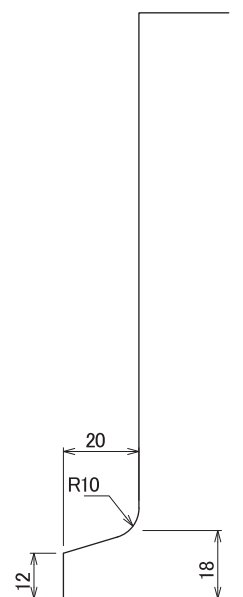
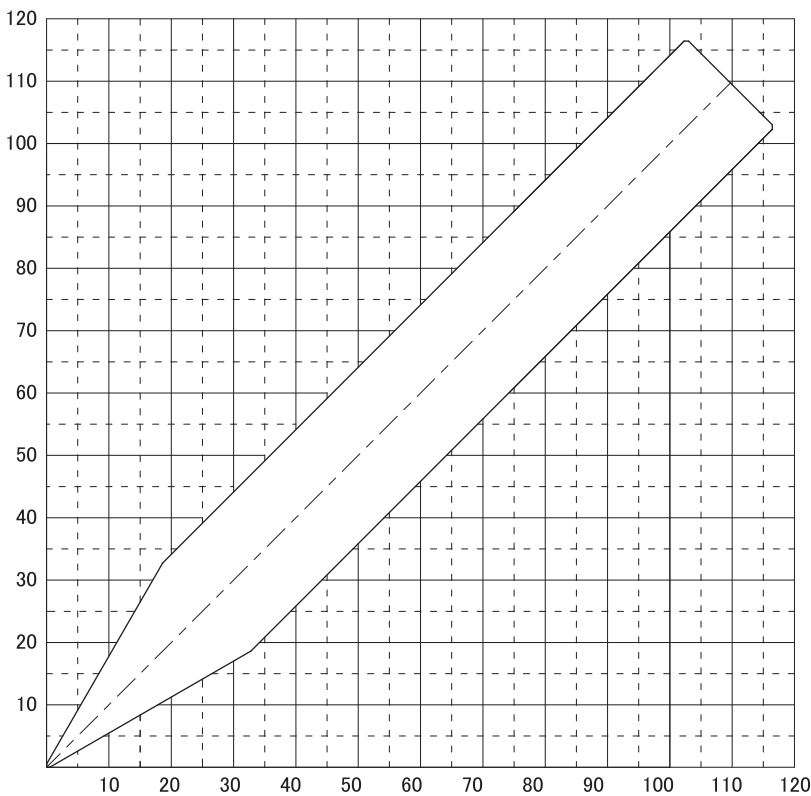
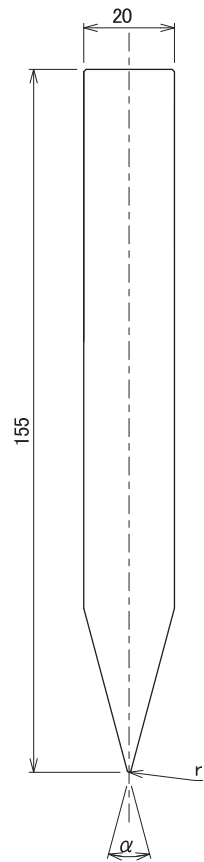
STANDARD PUNCH (NP06)

Material: **SCM440** Hardness: **HRC47 ± 3**

L: 835mm S: 415mm

Sectioning A

Type	α	r (mm)	k (mm)	Max (ton/m)	Product No.
	Angle				
NP06	30	0.2	-	100	P601
		0.4	-		P602
		1.0	-		P603
		3.0	-		P604
	60	5.0	-		P611



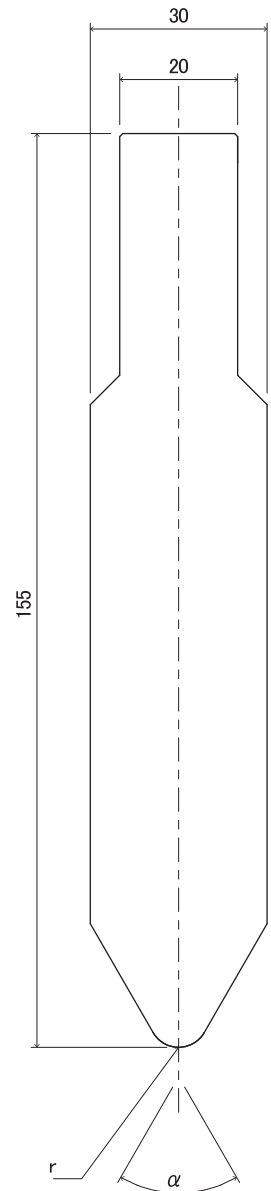
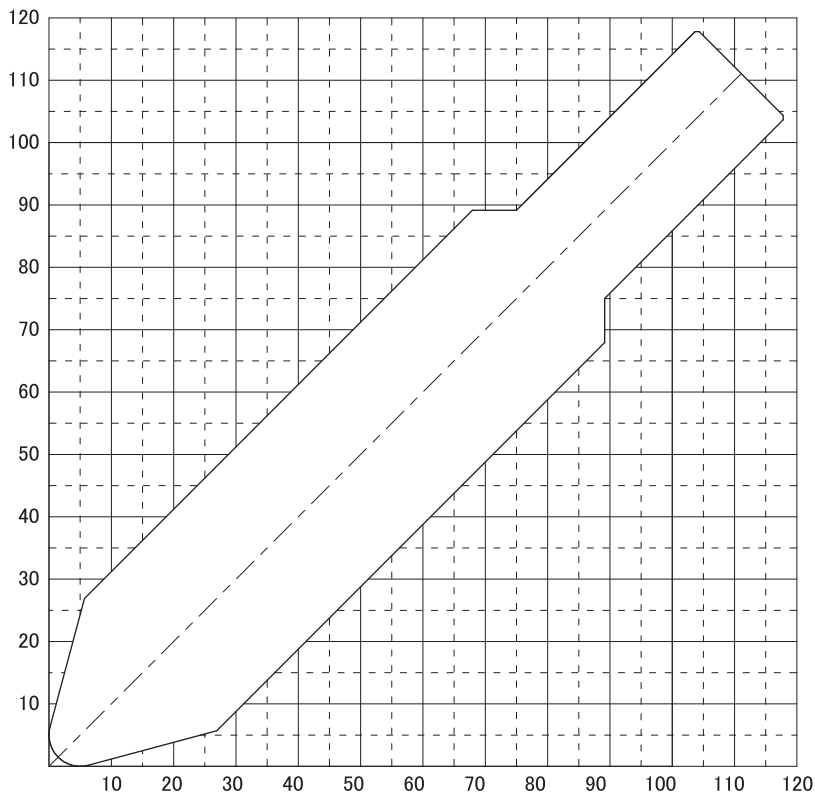
SPECIAL PUNCH (NP10) ONE PIECE PUNCH

Material: **SCM440** Hardness: **HRC47 ± 3**

L: 835mm S: 415mm

Sectioning A

Type	Parts name	ϕ	Max	Product No.
		(mm)	(ton/m)	
	One piece punch $\alpha = 60^\circ$	R=5	100	P102
		R=10		P103
		R=15		P104



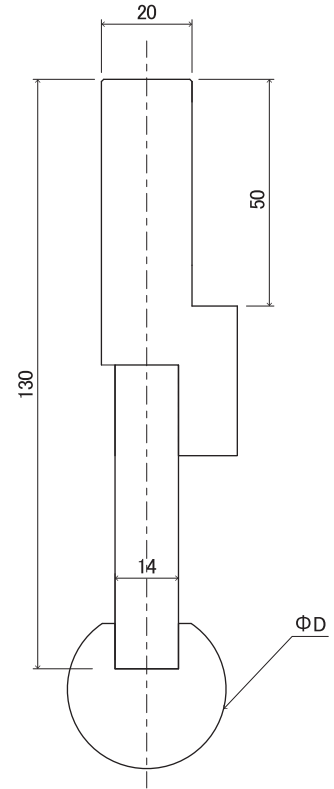
SPECIAL PUNCH (NP10) PUNCH TIPS

Material: **S50C** Hardness: **HRC25 ± 3**

L: 835mm S: 415mm

Sectioning A

Type	Parts name	ϕ	Max	Product No.
		(mm)	(ton/m)	
NP10	Holder	-	-	P101
	Punch tip	28	100	D028
		30		D030
		35		D035
		40		D040
		45		D045
		50		D050
		55		D055
		60		D060
		65		D065



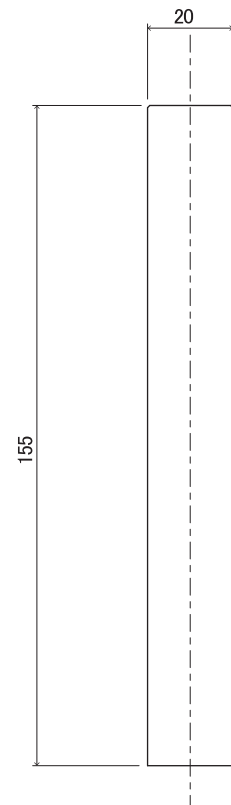
STANDARD PUNCH (NP11)

Material: **SCM440** Hardness: **HRC47 ± 3**

L: 835mm S: 415mm

Sectioning A

Type	α	r	k	Max	Product No.
	Angle	(mm)	(mm)	(ton/m)	
NP11				100	P111



STANDARD DIE (V00-25)

Material: **SCM440** Hardness: **HRC47 ± 3**

L: 835mm S: 415mm

Sectioning

Series	Type	V	α	r	A	B	Max	Product No.
		(mm)	Angle	(mm)	(mm)	(mm)	(ton/m)	
NA	V00A	-	-	-	-	-	100	V000-00-01

Series	Type	V	α	r	A	B	Max	Product No.
		(mm)	Angle	(mm)	(mm)	(mm)	(ton/m)	
NA	V04A	4	85	0.7	2.0	7.0	60	V004-85-01
			88					V004-88-01
			90					V004-90-01
	V06A	6	85	1.0	3.0	10.0	80	V006-85-01
			88					V006-88-01
			90					V006-90-01
	V08A	8	85	1.0	4.0	12.0	90	V008-85-01
			88					V008-88-01
			90					V008-90-01
	V10A	10	85	1.5	5.0	15.0	100	V010-85-01
			88					V010-88-01
			90					V010-90-01
	V12A	12	85	1.5	6.0	18.0	100	V010-85-01
			88					V012-88-01
			90					V012-90-01
	V14A	14	85	1.5	7.0	22.0	100	V012-85-01
			88					V014-88-01
			90					V014-90-01

Series	Type	V	α	r	A	B	Max	Product No.
		(mm)	Angle	(mm)	(mm)	(mm)	(ton/m)	
NAM	V06M	6	85	2.5	3.0	10.0	80	V006-85-21
	V08M	8		3.0	4.0	12.0	90	V008-85-21
	V10M	10		3.5	5.0	15.0	100	V010-85-21
	V12M	12		4.0	6.0	18.0		V012-85-21
	V14M	14		5.0	7.0	22.0		V014-85-21

Series	Type	V	α	r	A	B	Max	Product No.
		(mm)	Angle	(mm)	(mm)	(mm)	(ton/m)	
NA	V04A	4	30	0.7	5.0	7.0	15	V004-30-01
	V06A	6		1.0	8.0	10.0	18	V006-30-01
					10.0	12.0	21	V008-30-01
	V10A	10		1.5	14.0	15.0	24	V010-30-01
	V12A	12			15.0	18.0	36	V012-30-01
	V14A	14			18.0	22.0	45	V014-30-01

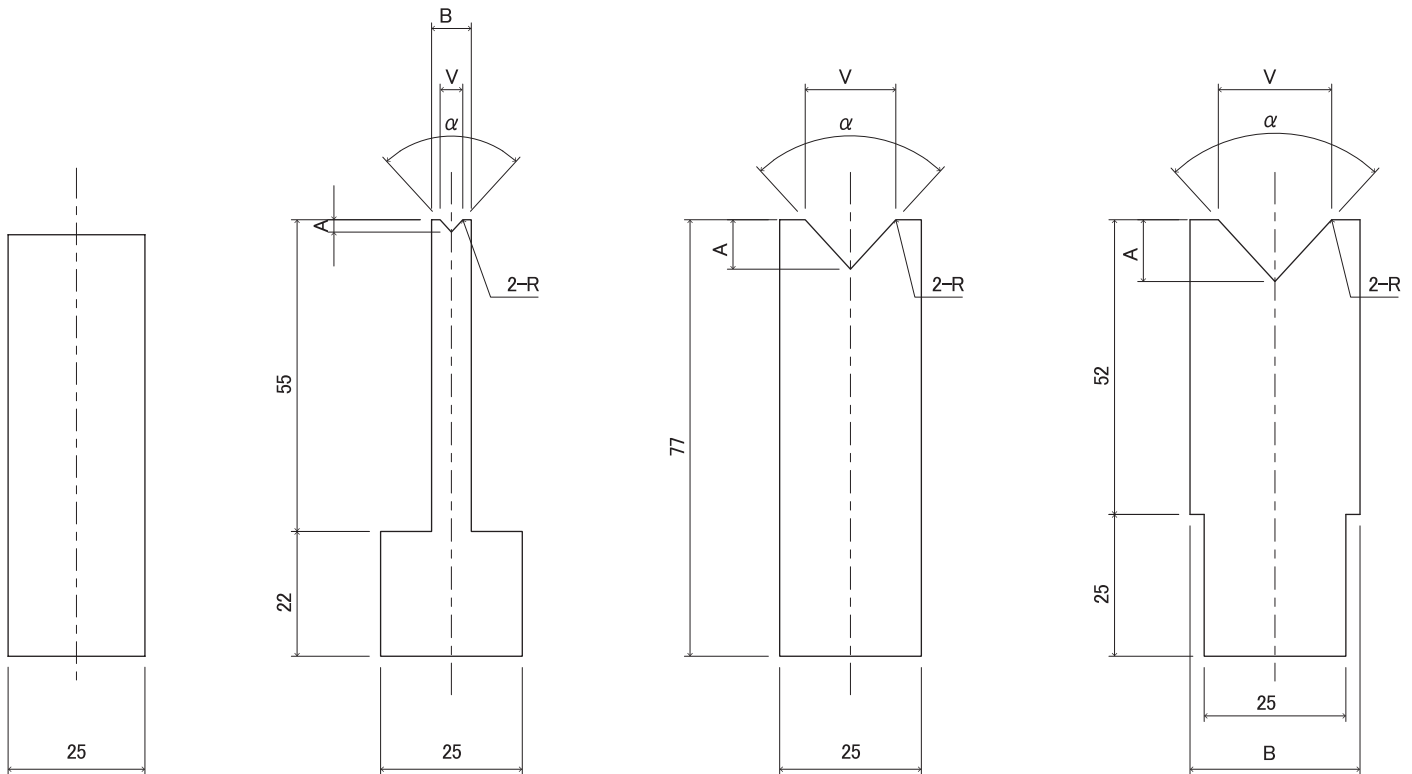
STANDARD DIE (V00-25)

■ V00

■ V04-14

■ V16

■ V20-25



Series	Type	V	α	r	A	B	Max	Product No.
		(mm)	Angle					
NA	V16A	16	85	1.5	8.0	-	100	V014-85-01
			88					V016-88-01
			90					V016-90-01

Series	Type	V	α	r	A	B	Max	Product No.
		(mm)	Angle					
NA	V16A	16	30	1.5	22.0	25.0	50	V016-30-01

Series	Type	V	α	r	A	B	Max	Product No.
		(mm)	Angle					
NA	V20A	20	85	2.5	10.0	30.0	100	V020-85-01
			88					V020-88-01
	V25A	25	85	3.0	13.0	36.0	V025-85-01	

Series	Type	V	α	r	A	B	Max	Product No.
		(mm)	Angle					
NA	V20A	20	30	2.5	28.0	30.0	60	V020-30-01
	V25A	25		3.0	30.0	36.0	70	V025-30-01

STANDARD DIE (V32-100)

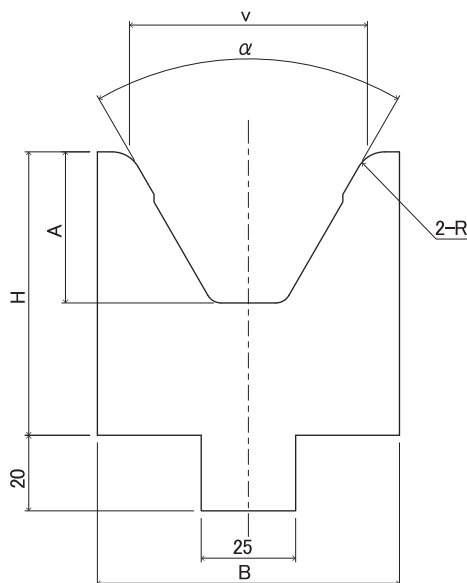
■ V32-63

Material: **SCM440**

Hardness: **HRC47 ± 3**

L: 835mm S: 415mm

Sectioning



Series	Type	V	α	r	A	B	H	Max (ton/m)	Product No.
		(mm)	Angle	(mm)	(mm)	(mm)	(mm)		
NA	V32A	32	40	4.0	30.0	45.0	75.0	100	V032-40-01
	V40A	40		5.0	37.0	60.0			V040-40-01
	V50A	50	60	6.0	35.0	65.0	V050-60-01		
	V63A	63		8.0	40.0	80.0	95.0		V063-60-01

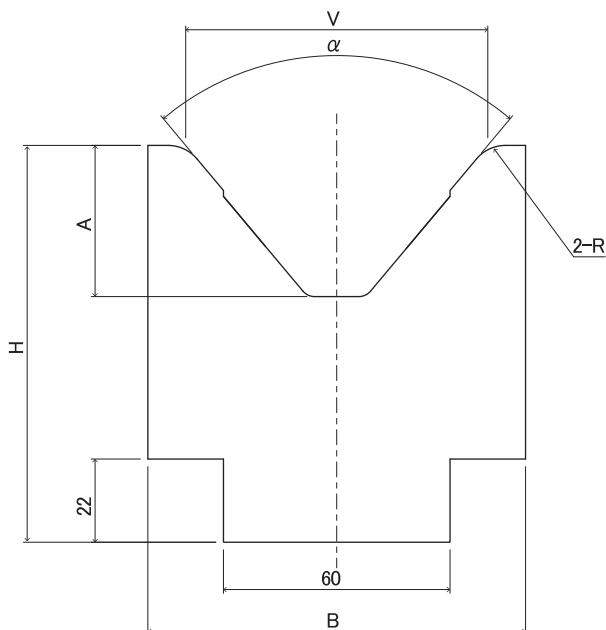
■ V80-100

Material: **S50C**

Hardness: **HRC52~55**

L: 835mm S: 415mm

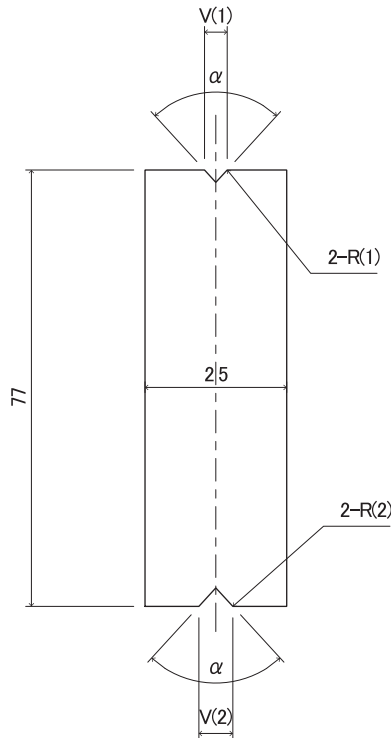
Sectioning



Series	Type	V	α	r	A	B	H	Max (ton/m)	Product No.
		(mm)	Angle	(mm)	(mm)	(mm)	(mm)		
NA	V80A	80	80	10.0	40.0	100.0	105.0	100	V080-80-01
	V100A	100		12.5	45.0	125.0	115.0		V100-80-01

STANDARD 2V DIE

Material: **SCM440**
 Hardness: **HRC47 ± 3**
 L: 835mm S: 415mm
 Sectioning



Series	Type	V(1)	V(2)	α	R(1)	R(2)	Max	Product No.		
		(mm)	(mm)	Angle	(mm)	(mm)	(ton/m)			
N2V	V099C	4	6	85	0.7	1.0	90/100	V099-85-01		
				88				V099-88-01		
			8	85			1.0	80/100	V099-85-02	
				88					V099-88-02	
			6	10			85	1.0	80/90	V099-85-11
							88			V099-88-11
		12		85	1.5	70/90	V099-85-12			
				88			V099-88-12			
				85			60/90		V099-85-13	
				88					V099-88-13	
		8	10	85	1.0	70/80	V099-85-21			
				88			V099-88-21			
			12	85		1.5	60/80	V099-85-22		
				88				V099-88-22		
				85				50/80	V099-85-23	
				88					V099-88-23	
		10	12	85	1.5	60/70	V099-85-31			
				88			V099-88-31			
			14	85		50/70	V099-85-32			
				88			V099-88-32			
		12	14	85	1.5	50/60	V099-85-41			
				88			V099-88-01			
		6	00	30	1.0	-	100/90	V099-30-01		
				8			100/80	V099-30-02		
10	100/70			V099-30-03						

HIGH HEIGHT DIE

Material: **SCM440** Hardness: **HRC47 ± 3**

L: 835mm S: 415mm

Sectioning

Series	Type	V	α	r	A	B	Max	Product No.
		(mm)	Angle	(mm)	(mm)	(mm)	(ton/m)	
NS	V04S	4	85	0.7	2.0	7.0	20	V004-85-11
			88					V004-88-11
	V06S	6	85	1.0	3.0	10.0	60	V006-85-11
			88					V006-88-11
			30					V006-30-11
	V08S	8	85	1.0	4.0	12.0	90	V008-85-11
			88					V008-88-11
			30					V008-30-11
	V10S	10	85	1.5	5.0	15.0	100	V010-85-11
			88					V010-88-11
			30					V010-30-11
	V12S	12	85	1.5	6.0	18.0	100	V012-85-11
			88					V012-88-11
			30					V012-30-11
	V14S	14	85	1.5	7.0	22.0	100	V014-85-11
			88					V014-88-11
			30					V014-30-11

Series	Type	V	α	r	A	B	Max	Product No.
		(mm)	Angle	(mm)	(mm)	(mm)	(ton/m)	
NSM	V06MS	6	85	2.5	3.0	10.0	60	V006-85-31
	V08MS	8		3.0	4.0	12.0	90	V008-85-31
	V10MS	10		3.5	5.0	15.0	100	V010-85-31
	V12MS	12		4.0	6.0	18.0		V012-85-31
	V14MS	14		5.0	7.0	22.0		V014-85-31

Series	Type	V	α	r	A	B	Max	Product No.
		(mm)	Angle	(mm)	(mm)	(mm)	(ton/m)	
NS	V16S	16	85	1.5	8.0	25.0	100	V016-85-11
			88					V016-88-11
			30					V016-30-11

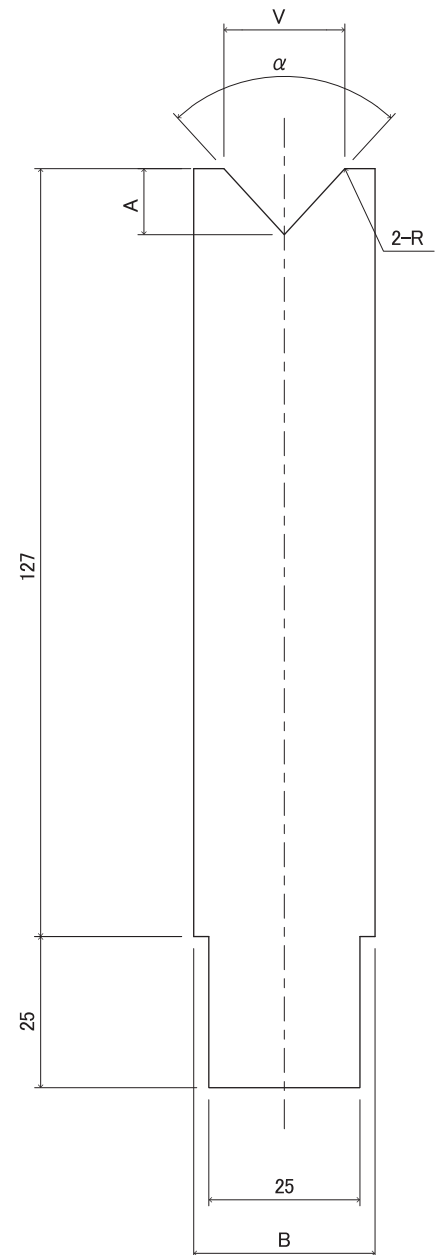
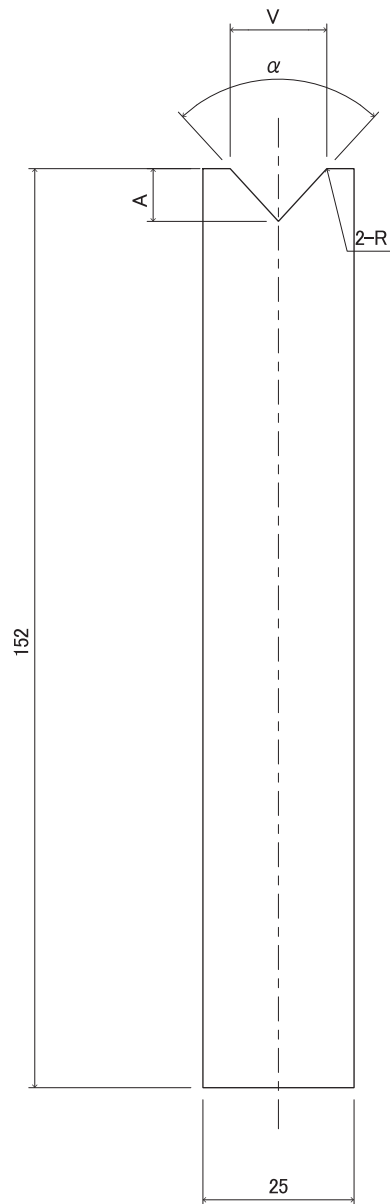
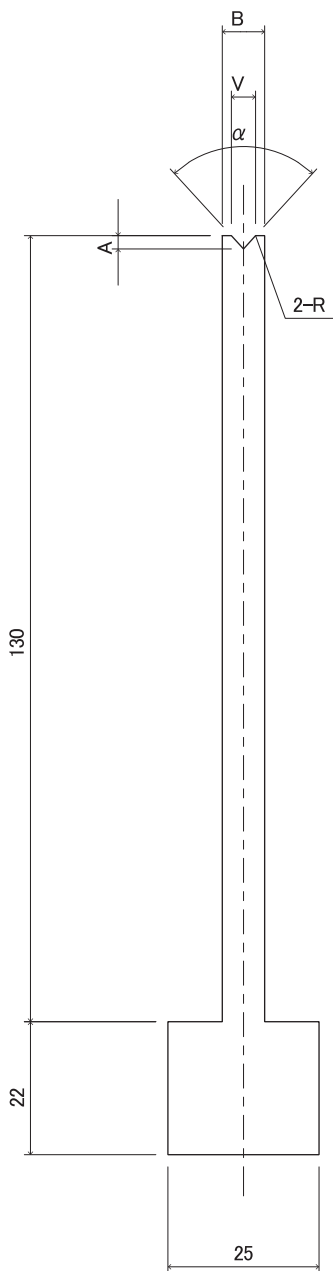
Series	Type	V	α	r	A	B	Max	Product No.
		(mm)	Angle	(mm)	(mm)	(mm)	(ton/m)	
NS	V20S	20	85	2.5	10.0	30.0	100	V020-85-11
			88					V020-88-11
			30					V020-30-11

HIGH HEIGHT DIE

■ V04-14

■ V16

■ V20

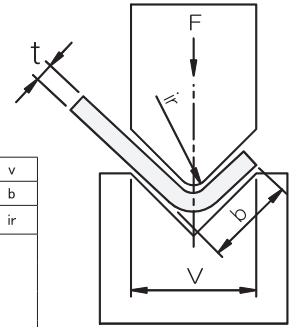


BEND CHART

t : Material thickness
(Tensile Strength 450~500N/mm²)

F : Pressure per 1m (kN/m)
ir : Radius of punch tip

b : Minium length of flange
v : Width of die



For mild steel

t (mm)	4	6	7	8	10	12	14	16	18	20	25	32	40	50	63	80	100	125	160	200	250	v
	2.8	4	5	5.5	7	8.5	10	11	13.5	14	17.5	22	28	35	45	55	71	89	113	140	175	b
0.5	40	30																				ir
0.6	60	40	40	40																		
0.8		70	70	50	40																	
1		110	100	80	70	60																
1.2			140	120	110	80	70	60														
1.4				150	130	110	100	90	80													
1.5				200	170	150	130	110	100	90												
1.6					170	150	130	110	100	90												
2						220	190	170	150	130	110											
2.3							250	230	190	170	150	120										
2.6								280	250	220	180	140										
3									340	300	240	190	150									
3.2										340	270	220	170	140								
3.5											330	260	200	160	130							
4											430	340	270	210	170							
4.5												440	340	270	210							
5												520	420	330	260	210						
6													600	480	380	300	240					
7															520	410	330	260				
9																670	540	430				
10																	850	670	530	420		
12																		960	780	600	550	
16																			1360	1070	860	
19																				1500	1250	1000
20																				1700	1350	1080
22																					1600	1300
25																					2100	1700
30																						2400

F (kN)

For stainless

t (mm)	4	6	7	8	10	12	14	16	18	20	25	32	40	50	63	80	100	125	160	200	250	v
	2.8	4	5	5.5	7	8.5	10	11	13.5	14	17.5	22	28	35	45	55	71	89	113	140	175	b
0.5	60	50																				ir
0.6	90	60	60	60																		
0.7	120	80	80	60	60																	
0.8		110	110	80	70																	
0.9		130	120	100	90	70																
1		170	150	120	110	90																
1.2			210	180	150	120	110	90														
1.5				290	230	200	170	150	130	120												
2					330	290	260	230	200	170												
2.5							390	350	300	250	190											
3								510	450	360	290	230										
4									650	510	410	320	260									
5										780	630	500	390	320								
6											900	720	570	450	360							
8														1020	810	650	510					
10															1290	1010	800	630				
12																1440	1170	900	830			
15																	1800	1410	1140			
20																		2500	2080	1670		
25																			3150	2550		
30																					3600	

F (kN)

NISSHINBO TYPE

CONIC HIGH PERFORMANCE TOOLING

- AMADA TYPE TOOLING
- TRUMPF TYPE TOOLING
- MURATA TYPE TOOLING
- KOMATSU TYPE TOOLING
- TOYO TYPE TOOLING
- NISSHINBO TYPE TOOLING

High Quality & Technology For  The Future

CONIC

CONIC CO., LTD

10-5 Taihei-dai, Shoo-cho, Katsuta-gun, Okayama 709-4321 Japan

Tel: (+81) 868 38 6154 | Fax: (+81) 868 38 6331

Email: tools@conic.co.jp | Website: www.conic.co.jp

CONIC PRECISION CO., LTD

55/22 moo 4. Buengkumphroy, Lumlukka, Phatumthani 12150 Thailand

Tel: (+66) 2 159 9870-1 | Fax: (+66) 2 159 9872

Email: conic.thai@conic.co.jp | Website: www.conic.co.jp/thai/

THE REPRESENTATIVE OFFICE OF CONIC CO., LTD. IN HO CHI MINH CITY

4F VIN Office building | No. 362/19 Ung Van Khiem St., Ward 25, Binh Thanh Dist., H.C.M.C, Vietnam

Tel: (+84) 28 7300 0250

Email: conic_vn@conic.co.jp

Dealer